

Analytical Concerns Associated with Emerging Polyfluoroalkyl Substances

Jennifer Robinson¹, Lauren Irwin¹, Jordan Stubbleski¹,
Nicole Riddell¹, Brock Chittim¹, Frank Dorman²

¹Wellington Laboratories Inc., 345 Southgate Drive, Guelph, Ontario, Canada, N1G 3M5;

²Waters Corporation, 34 Maple St., Milford MA, USA



WELLINGTON LABORATORIES INC.

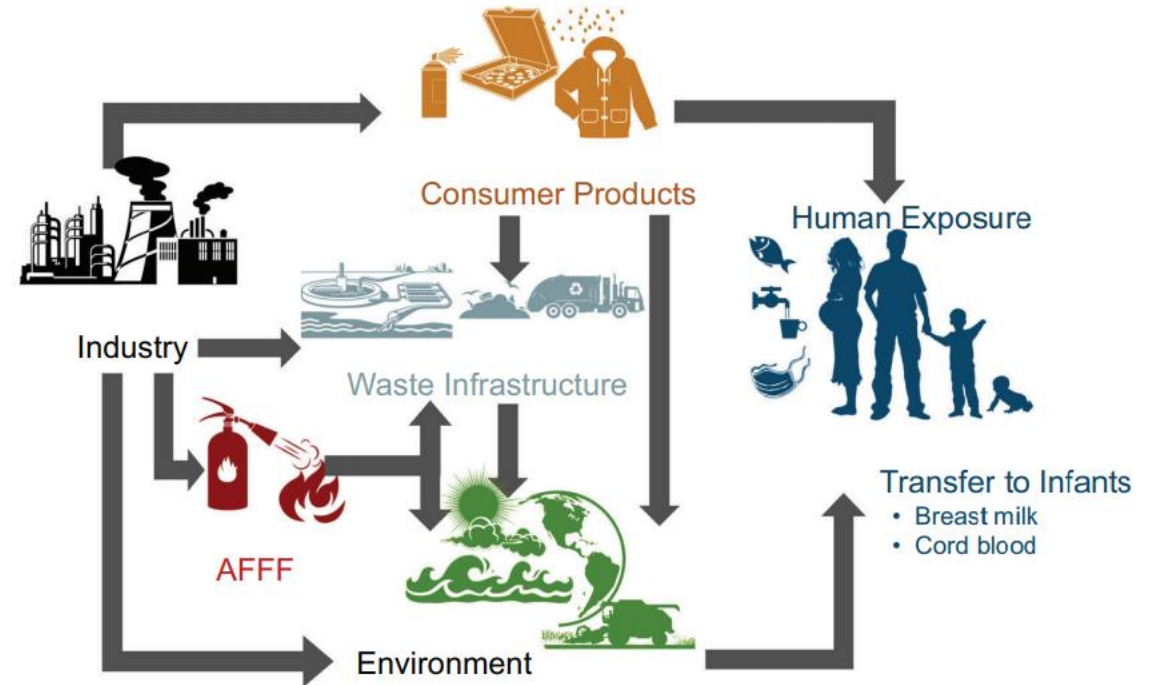


Per- and polyfluoroalkyl substances (PFAS)

- First synthesized in the 1930s

Common Uses:

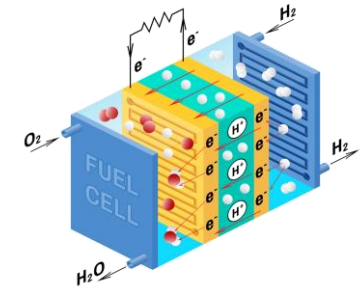
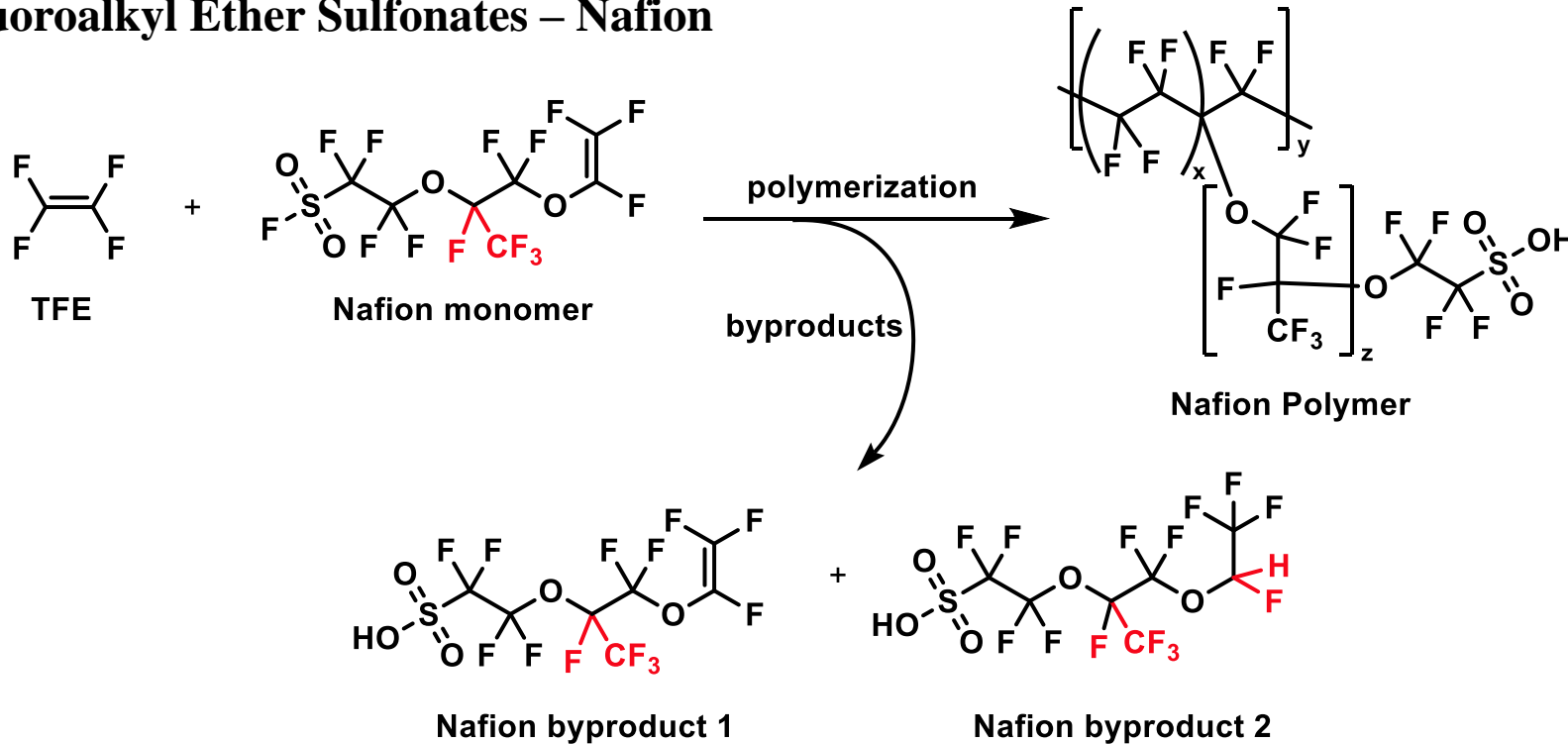
- Non-stick, grease/water resistant coatings
- Aqueous Film Forming Foams (AFFFs)
- Aids in polymerization
 - PFOA used in emulsion polymerization of fluoropolymers
- Persistent & bio-accumulative
 - Found worldwide



Sunderland, E.M. et al. *J Expo Sci Environ Epidemiol* 29, 131–147.



Perfluoroalkyl Ether Sulfonates – Nafion



- Fuel cells ^a
- Metal ion recovery
- Plating

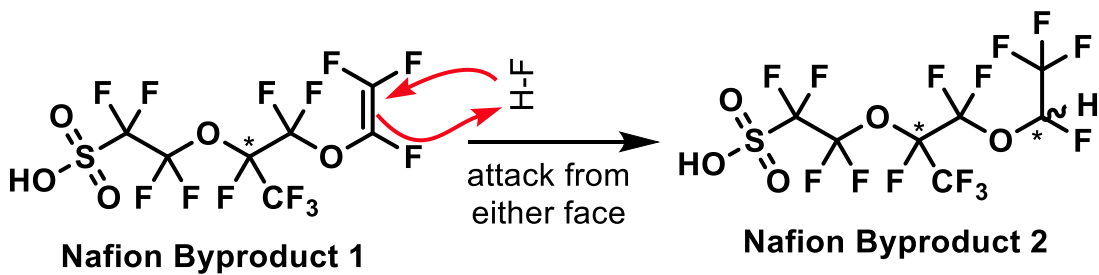
- Nafion byproducts were first detected in the Cape Fear River in 2012 ^b
- Mouse toxicology research reports liver enlargement + damage ^c
- NFBP2 has been found in seabirds in the CFR area ^d

a.) Heitner-Wirguin, C. *J. Membr. Sci.* **1996**, *120*, 1-33 b.) Strynar, M. *Environ. Sci. Technol.* **2015**, *49*, 11622–11630

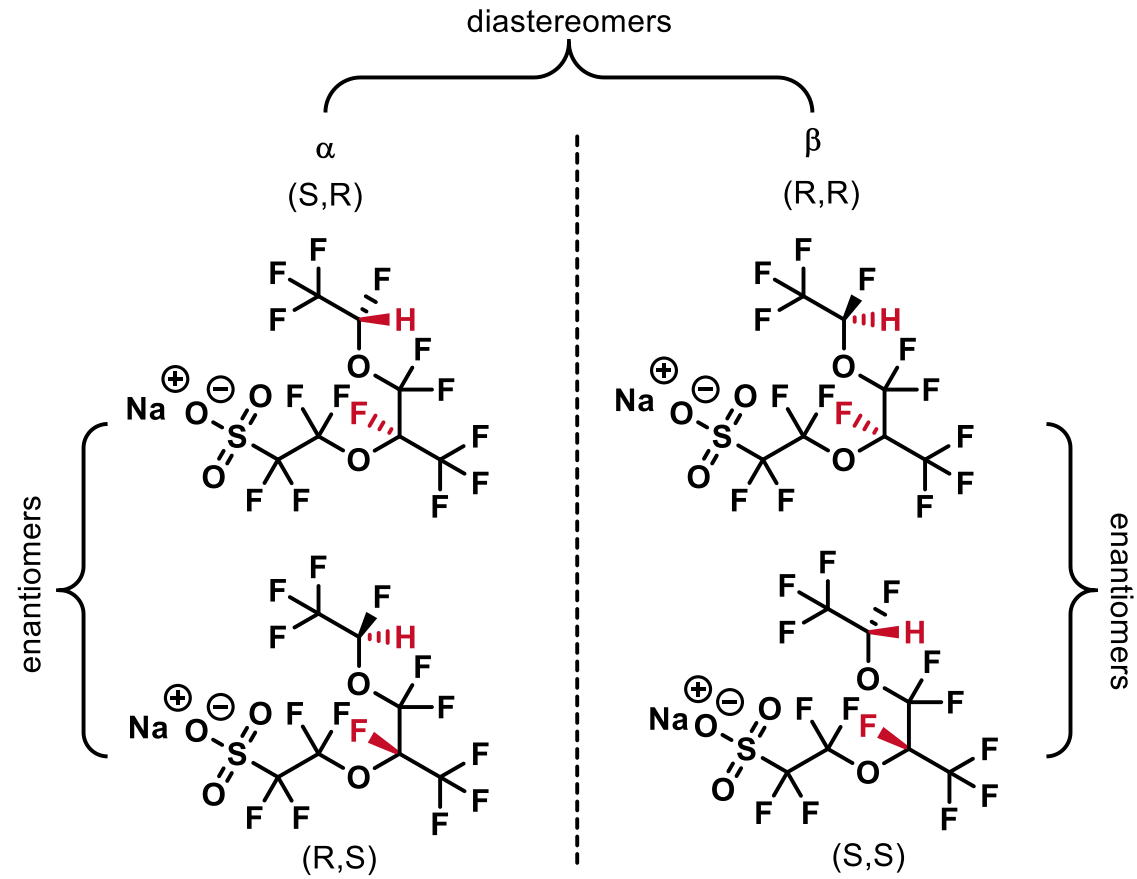
c.) Lang, J. R. *Toxicology* **2020**, *441*, 152529 d.) Robuck, A.R., *Environ. Sci. Technol.* **2020**, *54*, 12938–12948



- Formation: Strynar *et al.* (2015) suggested H-F addition across the alkene of NFBP1
- NFBP2 is a 1:1 mixture of diastereomers



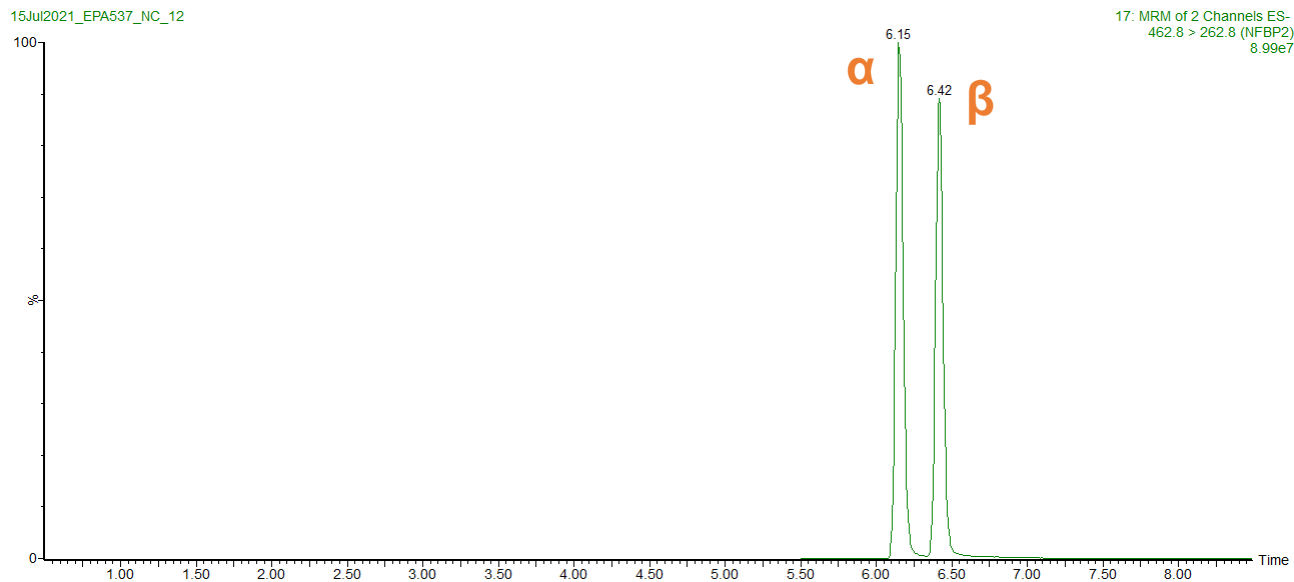
Na⁺ exchange





Characterization: Nafion Byproduct 2 (NFBP2)

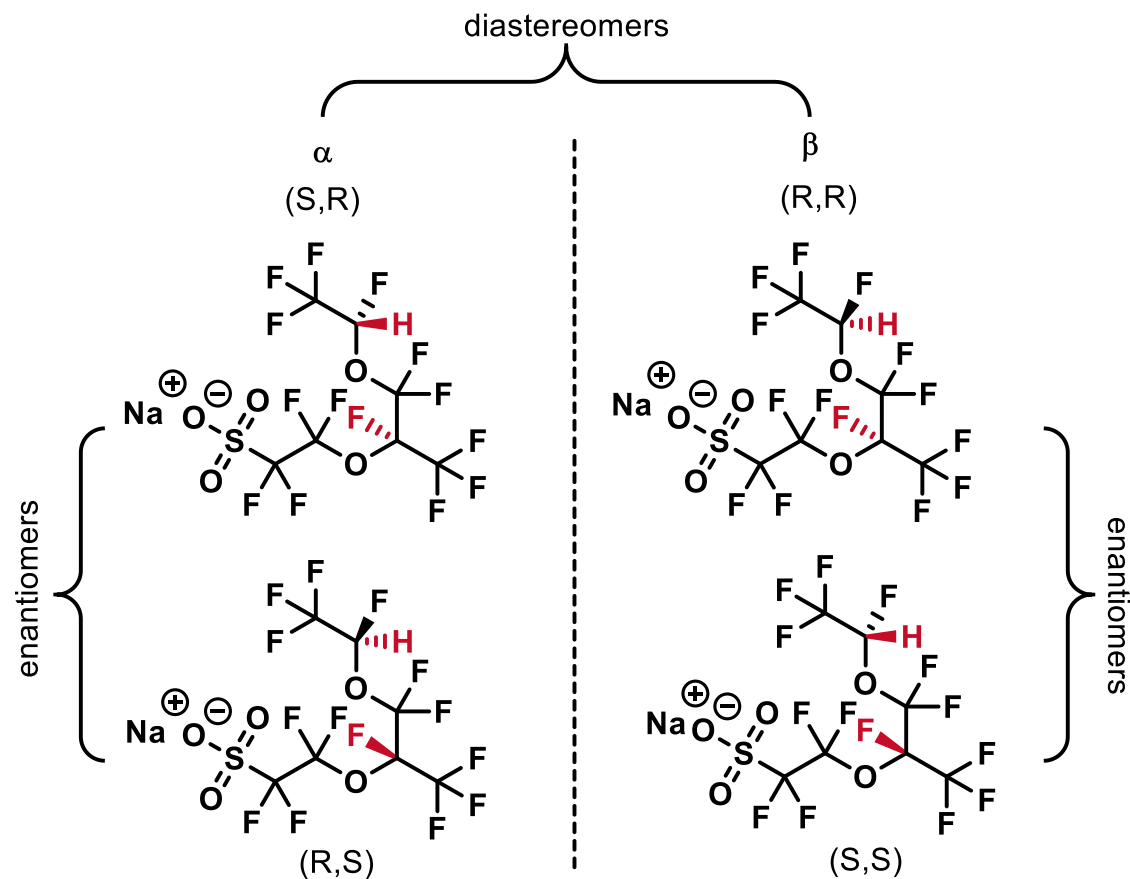
Waters™



MRM Transitions

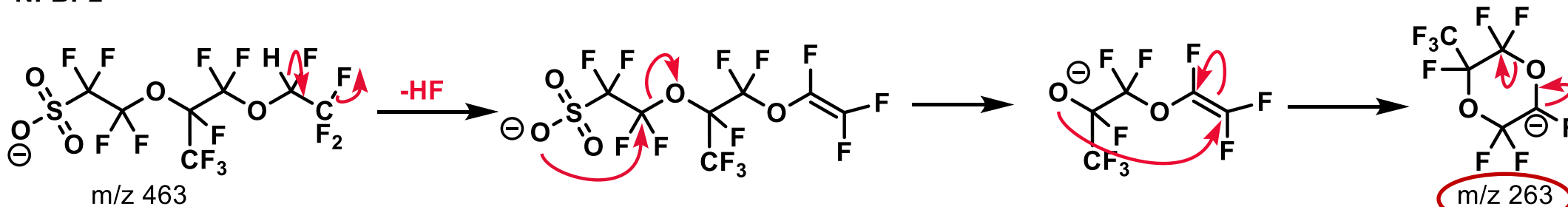
m/z 463 > 263 (Quantitative Transition)

m/z 463 > 213 (Qualitative Transition)

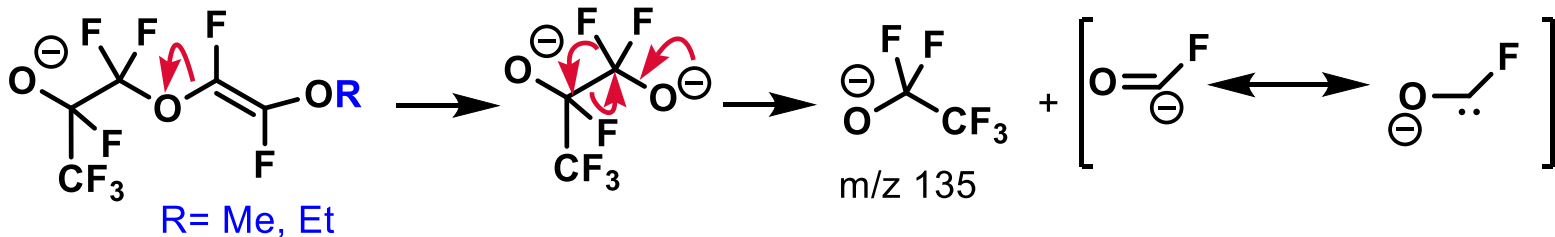




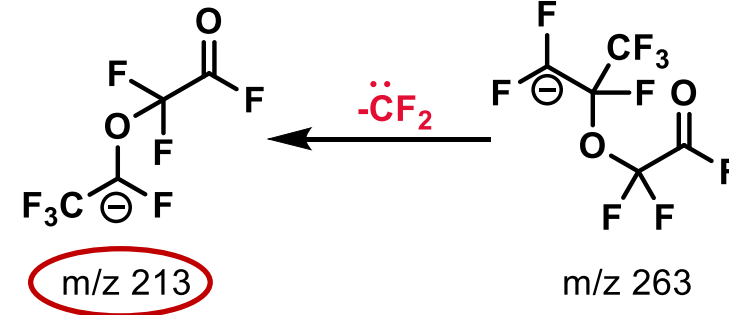
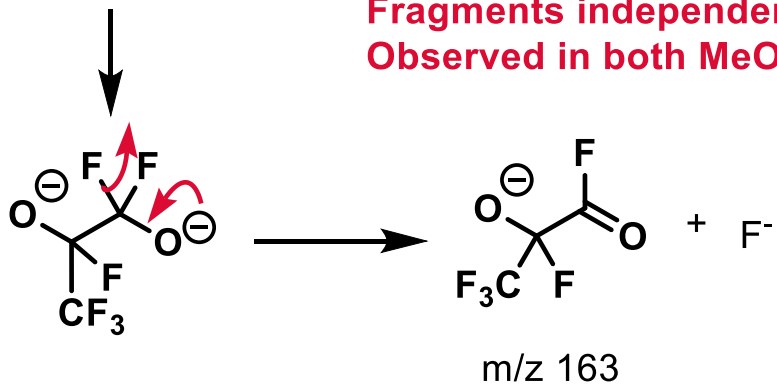
NFBP2



Common fragments m/z 135 and m/z 163

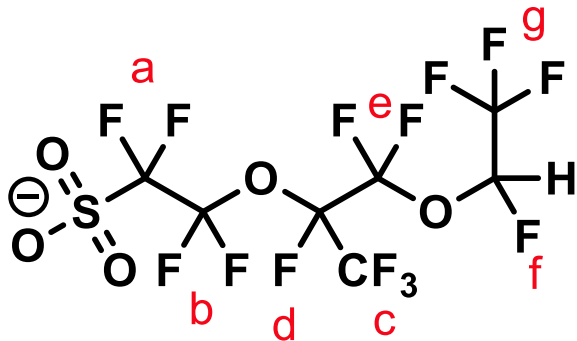


Fragments independent of alkoxy substitution.
Observed in both MeO- and EtO- products.

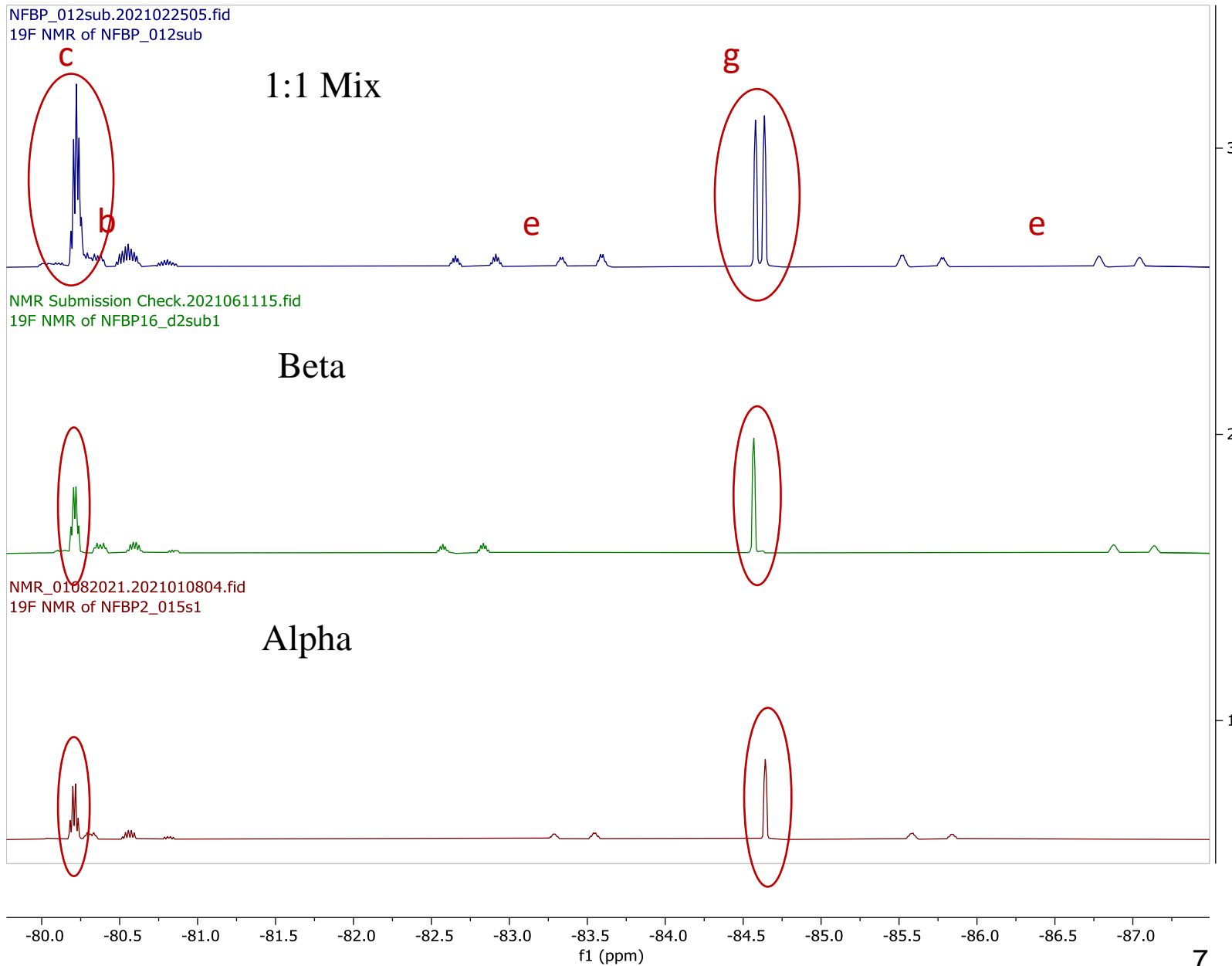




Constitutional or Stereoisomers?



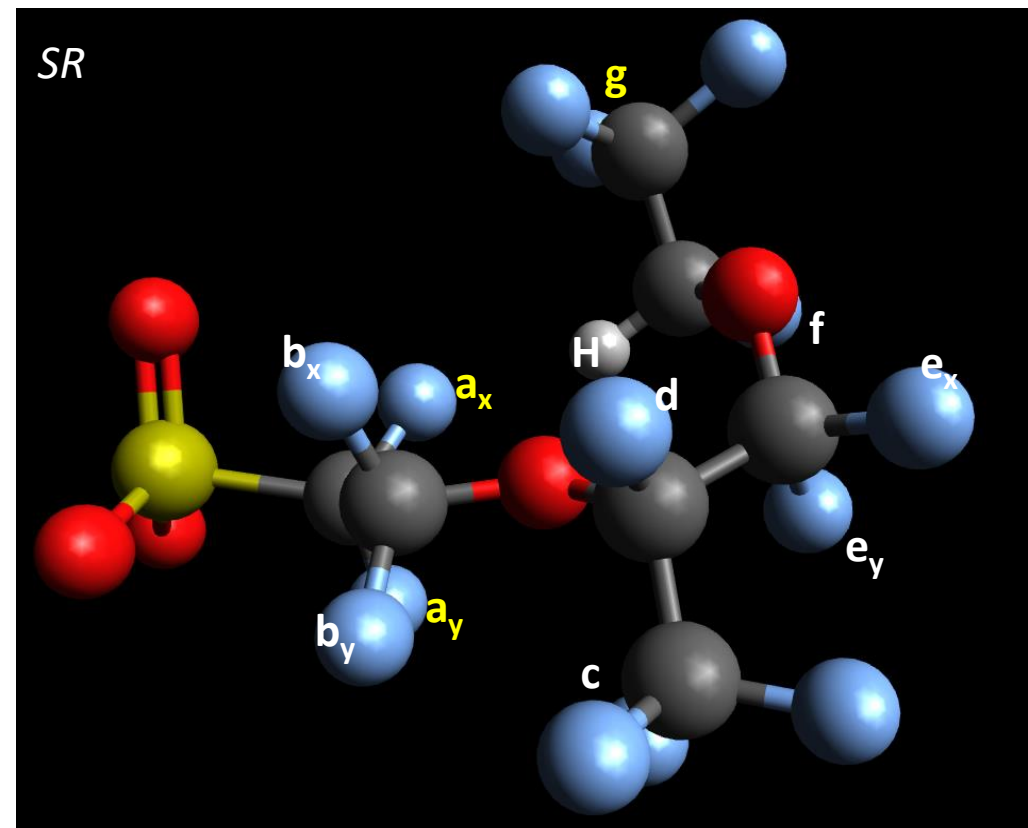
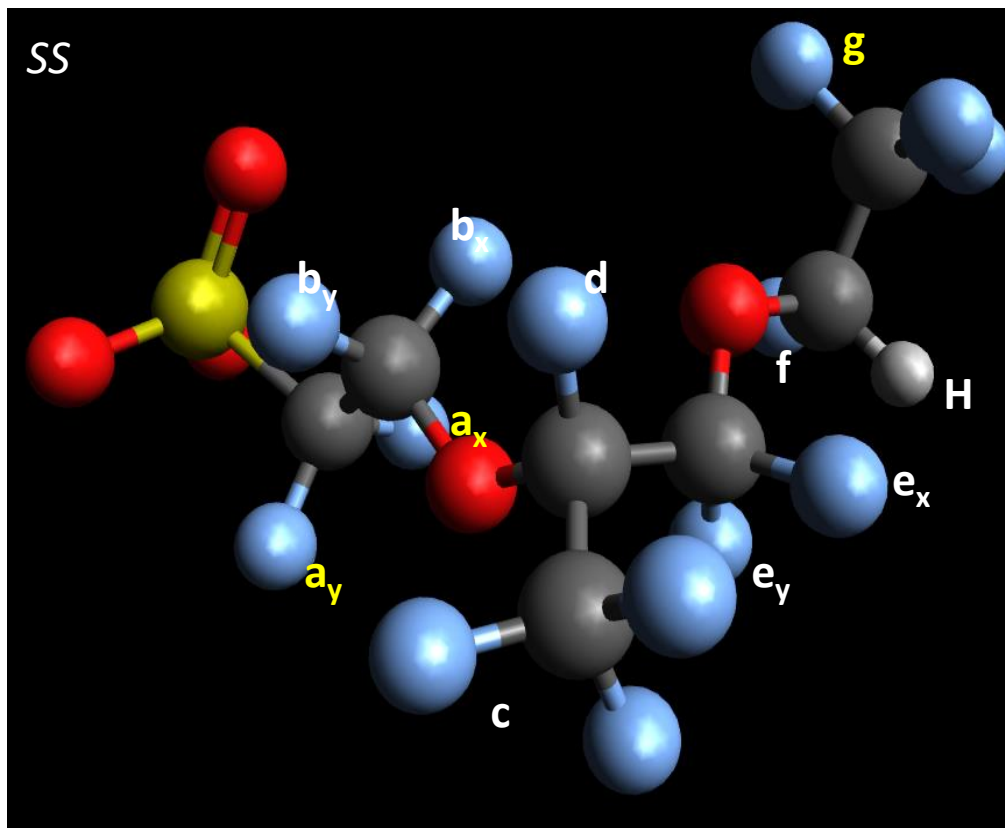
¹⁹F NMR confirms diastereomers





$\Delta E(SS-SR) = 0.015928105$ Hartree
= 9.99 kcal/mol energy difference between isomers

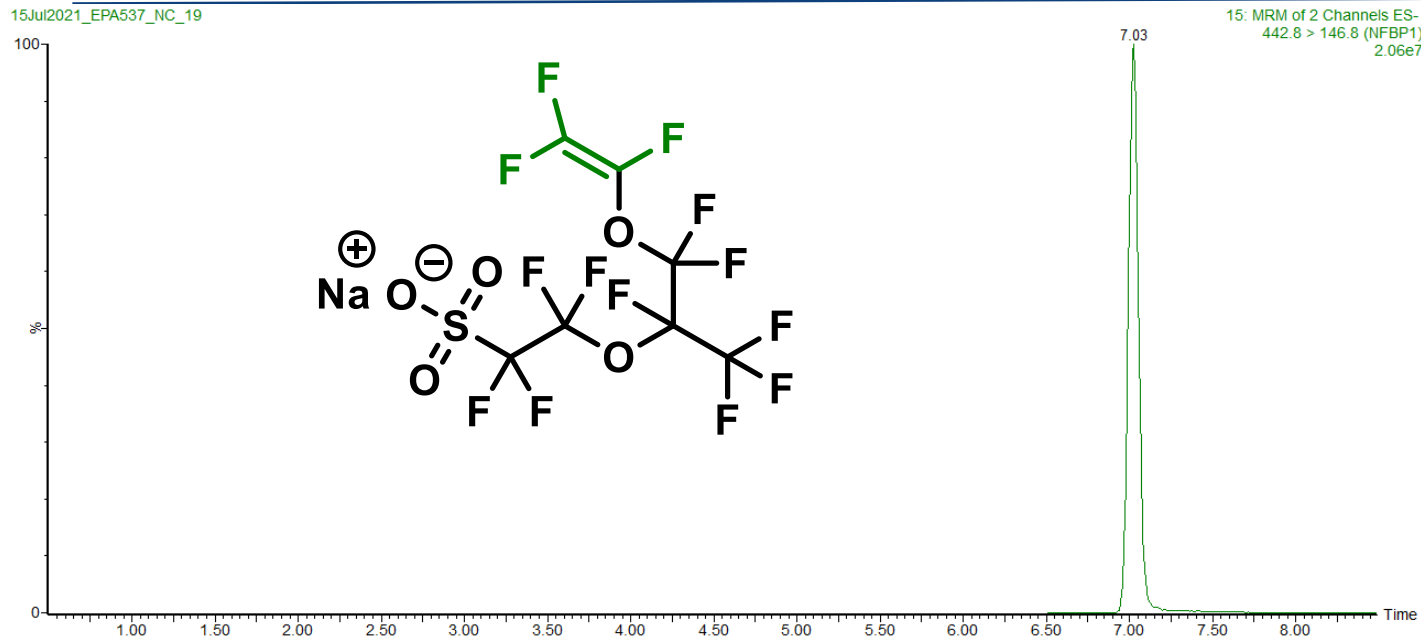
SR has a slightly lower energy
(believed to be the alpha isomer but 1D/2D
NMR data is not 100% conclusive)





Characterization: Nafion Byproduct 1 (NFBP1)

Waters™

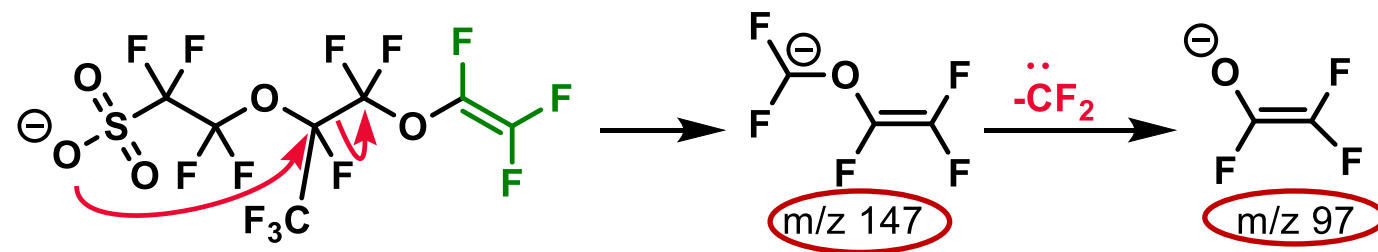


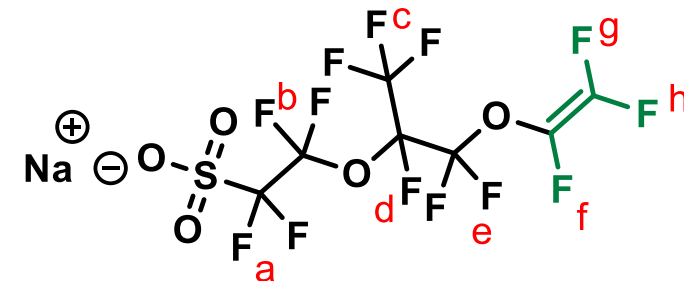
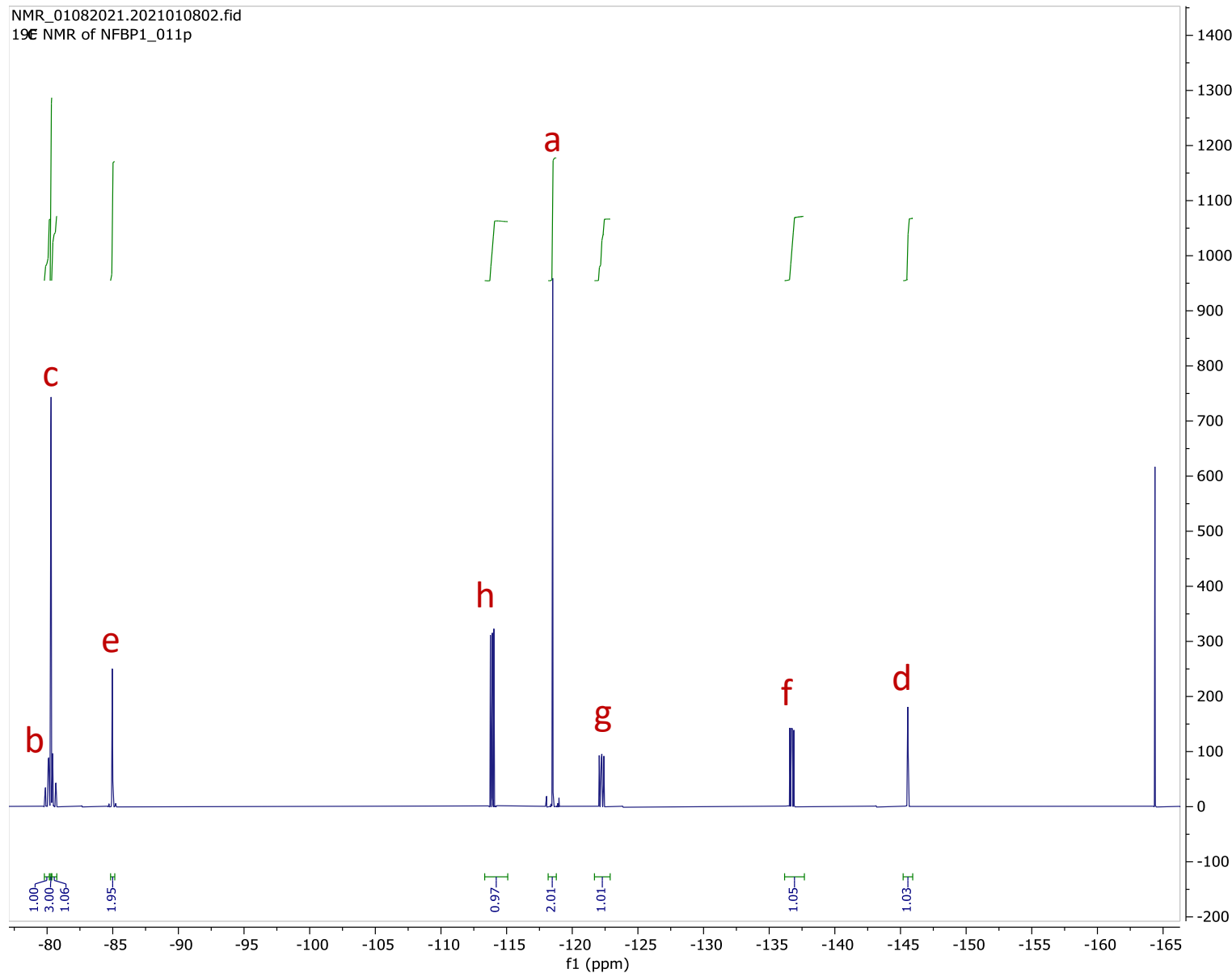
MRM Transitions

m/z 443 > 147 (Quantitative Transition)

m/z 443 > 97 (Qualitative Transition)

NFBP1



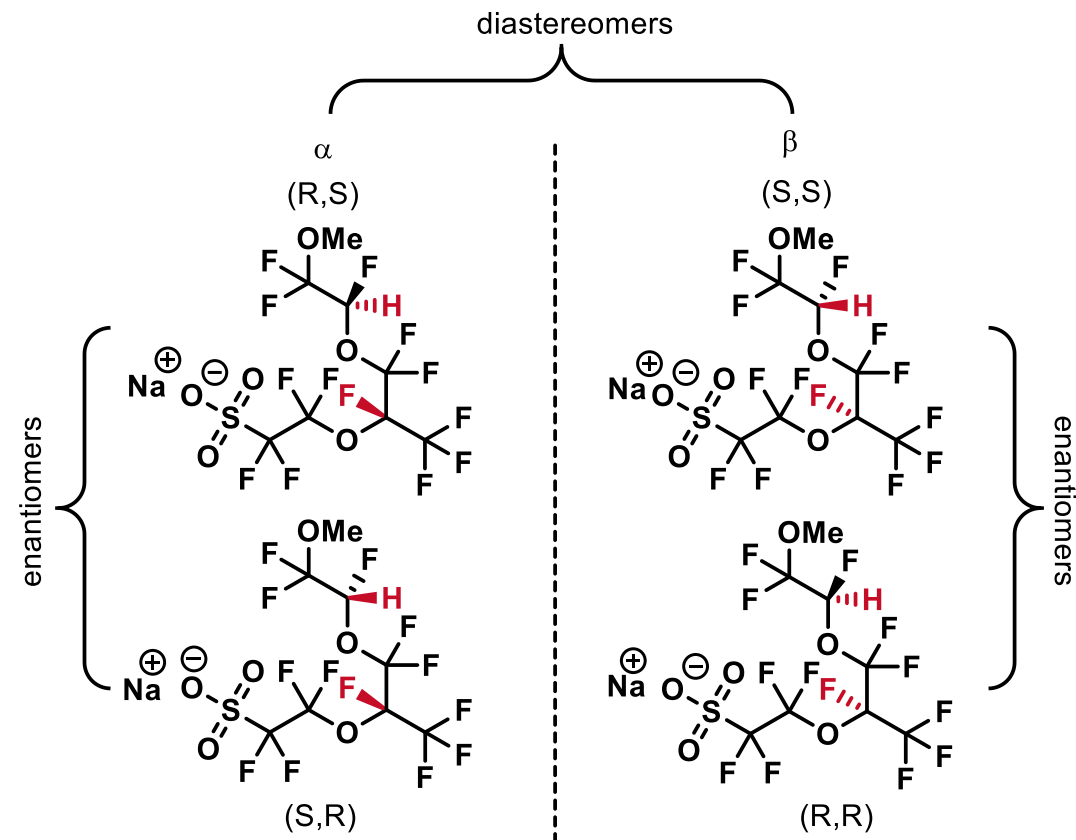
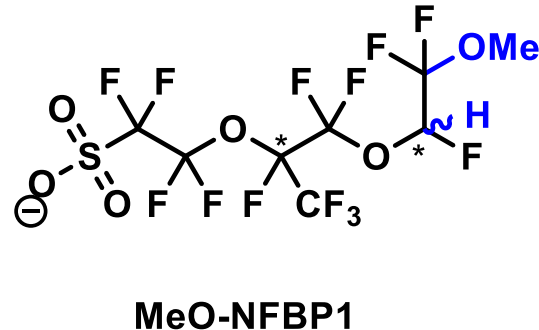
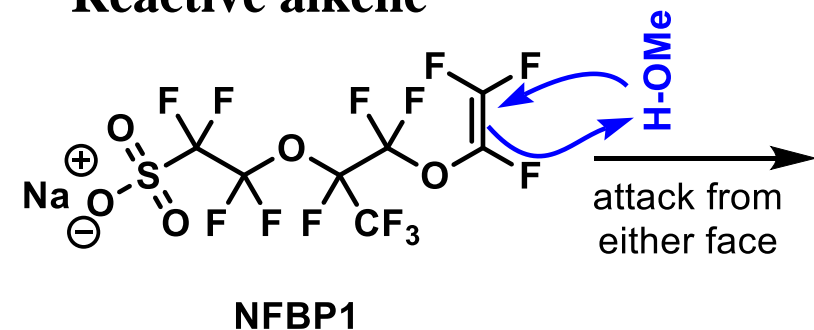


- ^{19}F NMR spectrum agrees with proposed structure

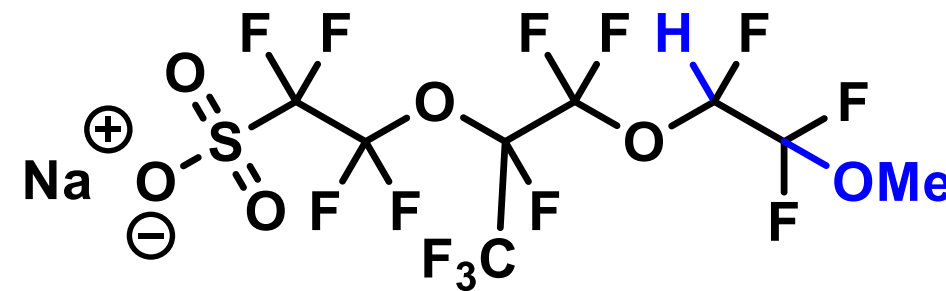
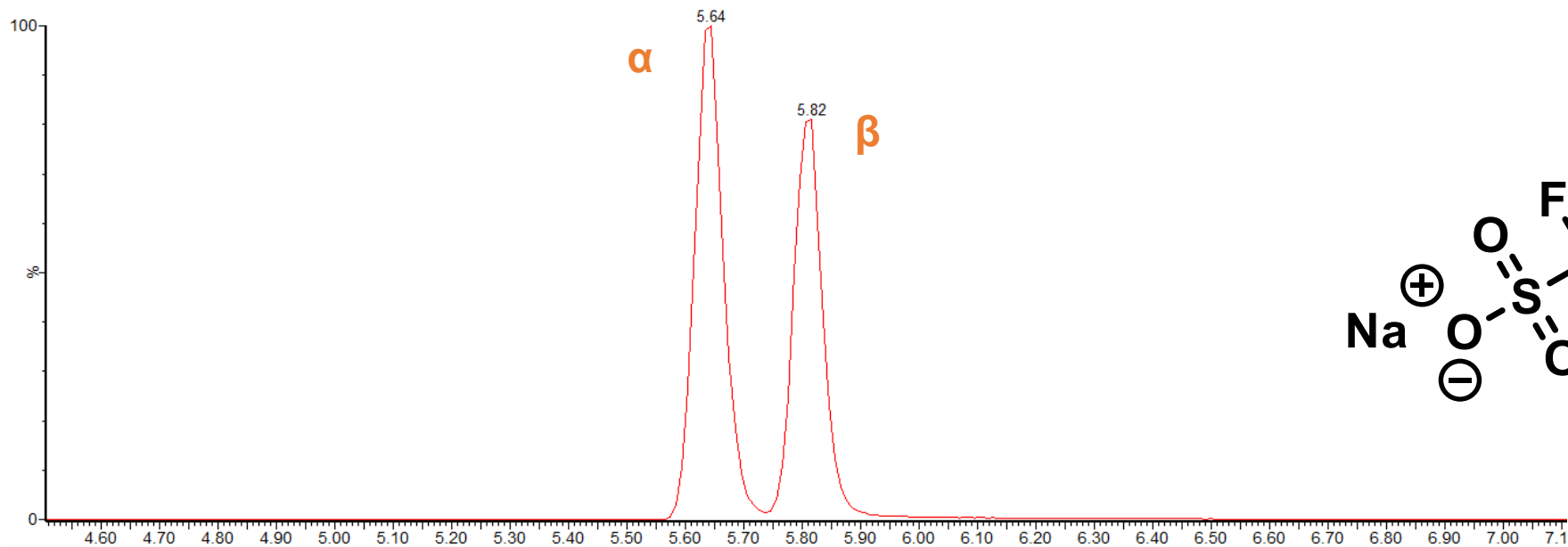


- Same addition mechanism as previously shown for NFBP1 to NFBP2 conversion

Reactive alkene



Mixture of diastereomers



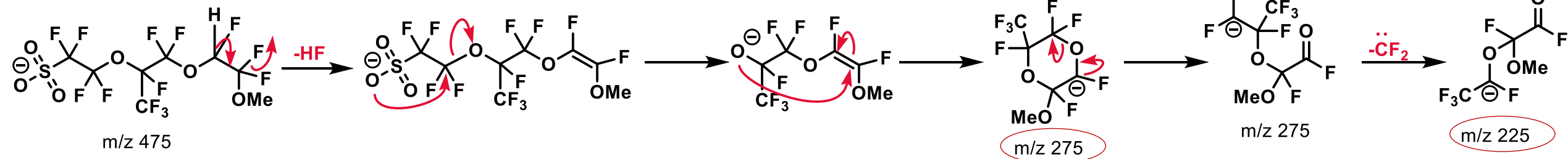
MRM Transitions

m/z 475 > 275 (Quantitative Transition)

m/z 475 > 225 (Qualitative Transition)



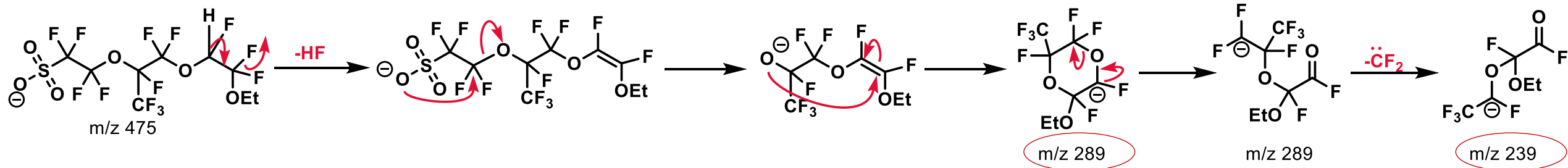
MeO-NFBP1



Fragmentation confirmed by synthesizing the EtO-NFBP1

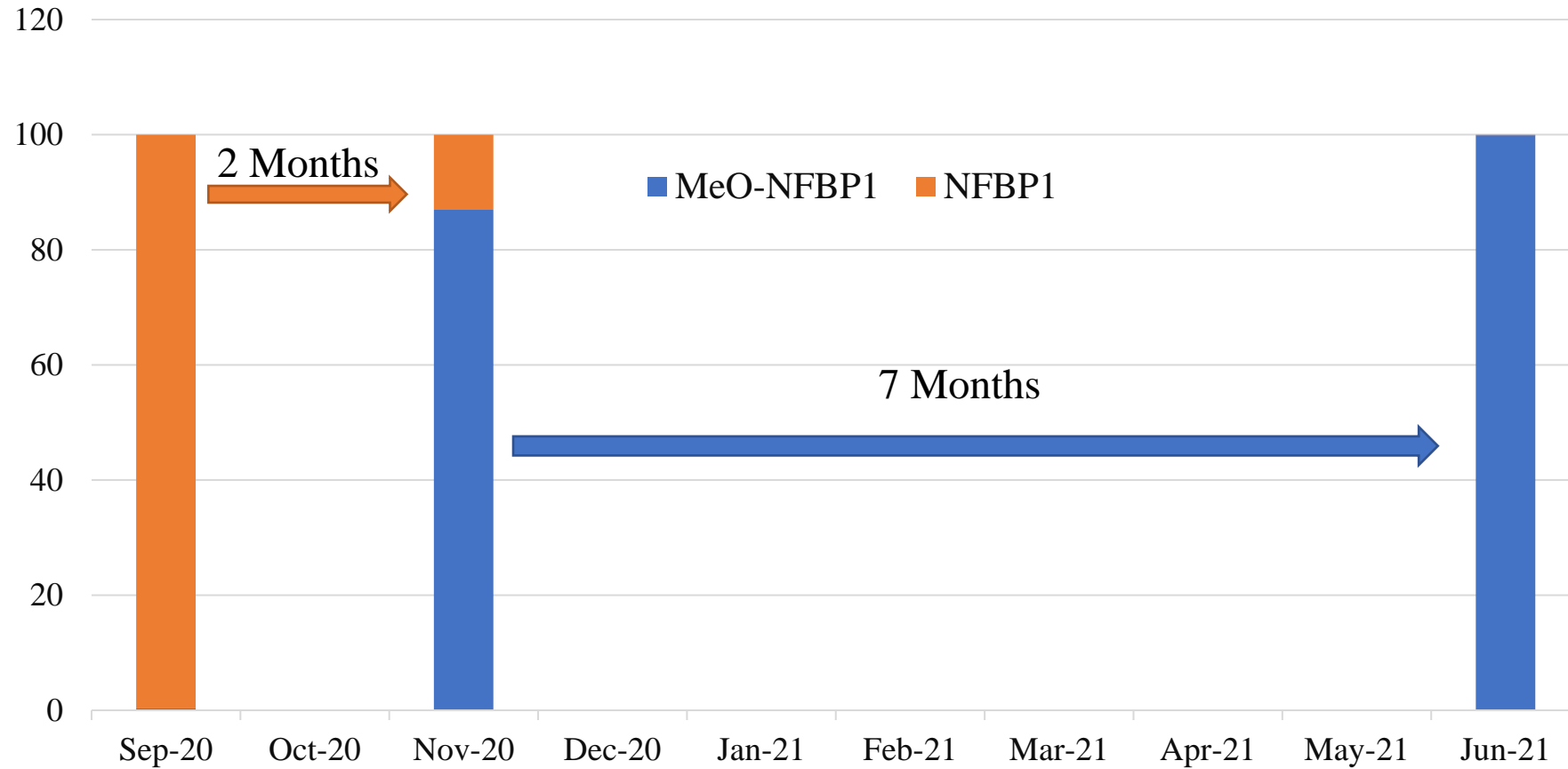
- m/z 239 observed

Check: EtO-NFBP1





5 mg of NFBP1 in 1 mL of methanol (19-24°C)
Ambient temp + pressure. Clear glass vial.





Where do we go from here?

PFBA
PFPeA
PFHxA
PFHpA
PFOA
PFNA
PFDA
PFUdA
PFDoA
PFTTrDA
PFTeDA
FBSA
FHxSA
FOSA
HFPO-DA
N-MeFOSAA: linear isomer
N-MeFOSAA: Σ branched isomers
N-EtFOSAA: linear isomer
N-EtFOSAA: Σ branched isomers

Goal: Expand target list of PFAS analytes in drinking water and analyze real water samples

PFAC30PAR

+NFBP1

+ α NFBP2

+ β NFBP2

+ α MeO-NFBP1

+ β MeO-NFBP1

L-PFBS
L-PFPeS
PFHxSK: linear isomer
PFHxSK: Σ branched isomers
L-PFHpS
PFOSK: linear isomer
PFOSK: Σ branched isomers
L-PFNS
L-PFDS
4:2FTS
6:2FTS
8:2FTS
NaDONA
9Cl-PF3ONS
11Cl-PF3OUdS



LC Method

- Instrument: Waters Acquity I Class with modified PFAS kit
- Column: Waters ACQUITY UPLC BEH Shield RP18
- Mobile Phase A: 10 mM ammonium acetate in water
- Mobile Phase B: 10 mM ammonium acetate in 80:20 methanol:acetonitrile
- Injection volume: 1.5 μ L
- Gradient:

	Time (min)	Flow (mL/min)	%A	%B
1	Initial	0.300	60.0	40.0
2	3.50	0.300	45.0	55.0
3	10.00	0.300	30.0	70.0
4	15.00	0.300	15.0	85.0
5	18.00	0.300	15.0	85.0
6	18.50	0.300	60.0	40.0

Source Parameters

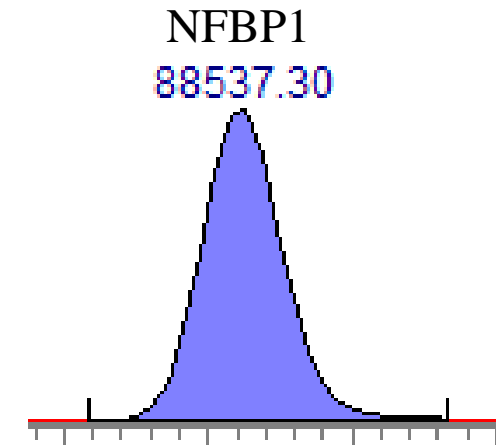
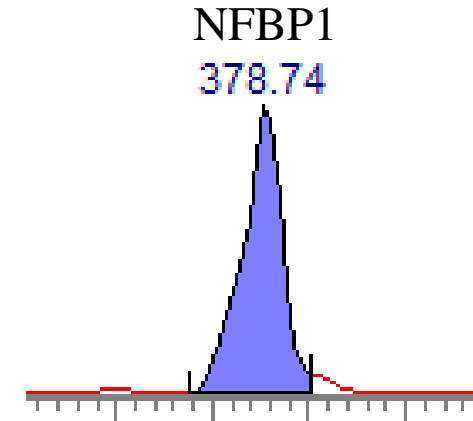
- Instrument: Waters Xevo TQ-XS
- Ion mode: ESI-
- Capillary voltage: 1.50 kV
- Desolvation temperature: 450°C
- Desolvation gas flow: 1000 L/hr
- Cone gas flow: 150 L/hr

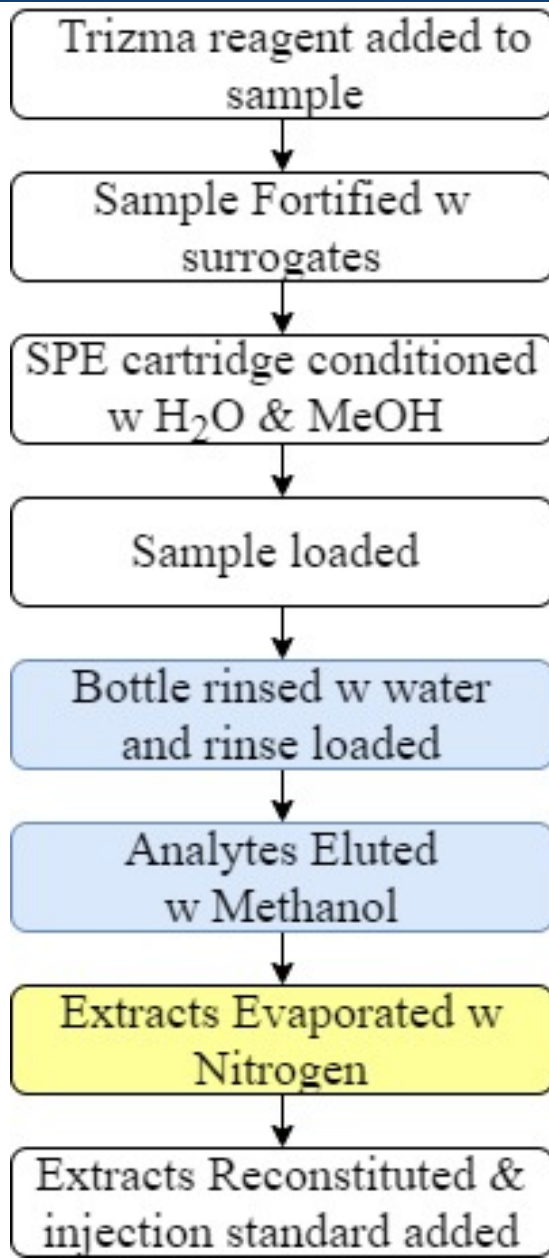




Blank water samples spiked with PFAC30PAR, NFBP1 and NFBP2 (and associated surrogates)

- EPA Method 533:
 - WAX SPE cartridge
 - PFAC30PAR and NFBP2 recoveries 80-120%
 - Lost majority of NFBP1, barely detectable (ND - 0.4%)
 - Possibly due to base exposure (NH_4OH)
 - Extraction repeated to ensure accuracy of results
- EPA Method 537:
 - SDVB SPE cartridge
 - Good recoveries of NFBP1 (>78%), NFBP2, and the majority of PFAC30PAR analytes
 - PFBA, PFPeA and FOSA recoveries were problematic at first due to SPE break-through and volatility issues

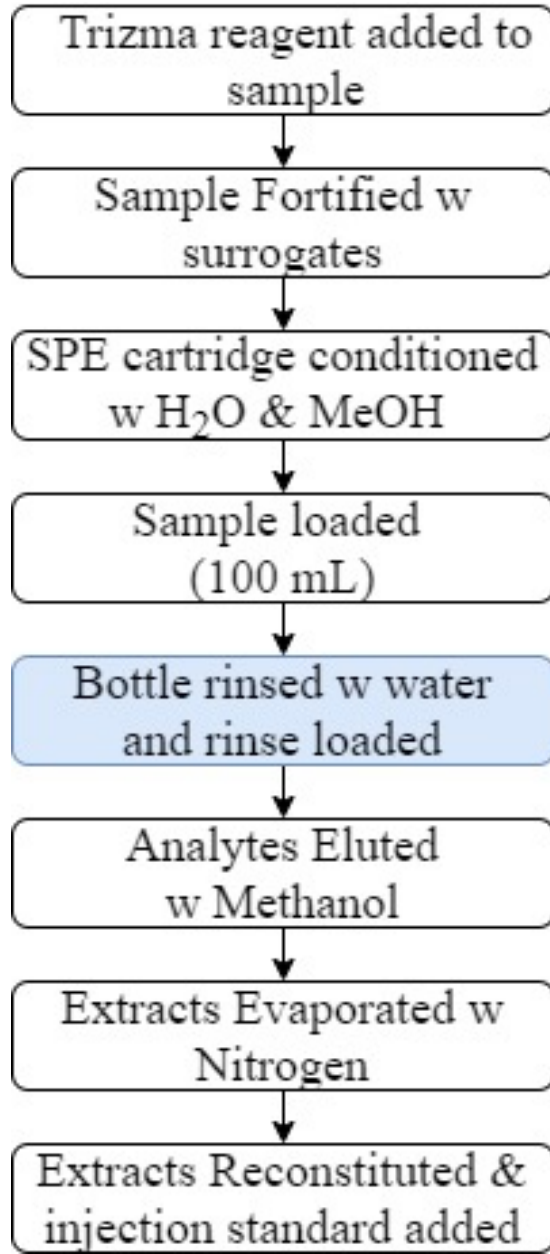




SDVB SPE Cartridge

¹³C₄-PFBA, ¹³C₅-PFPeA and ¹³C₈-FOSA surrogate recoveries were problematic

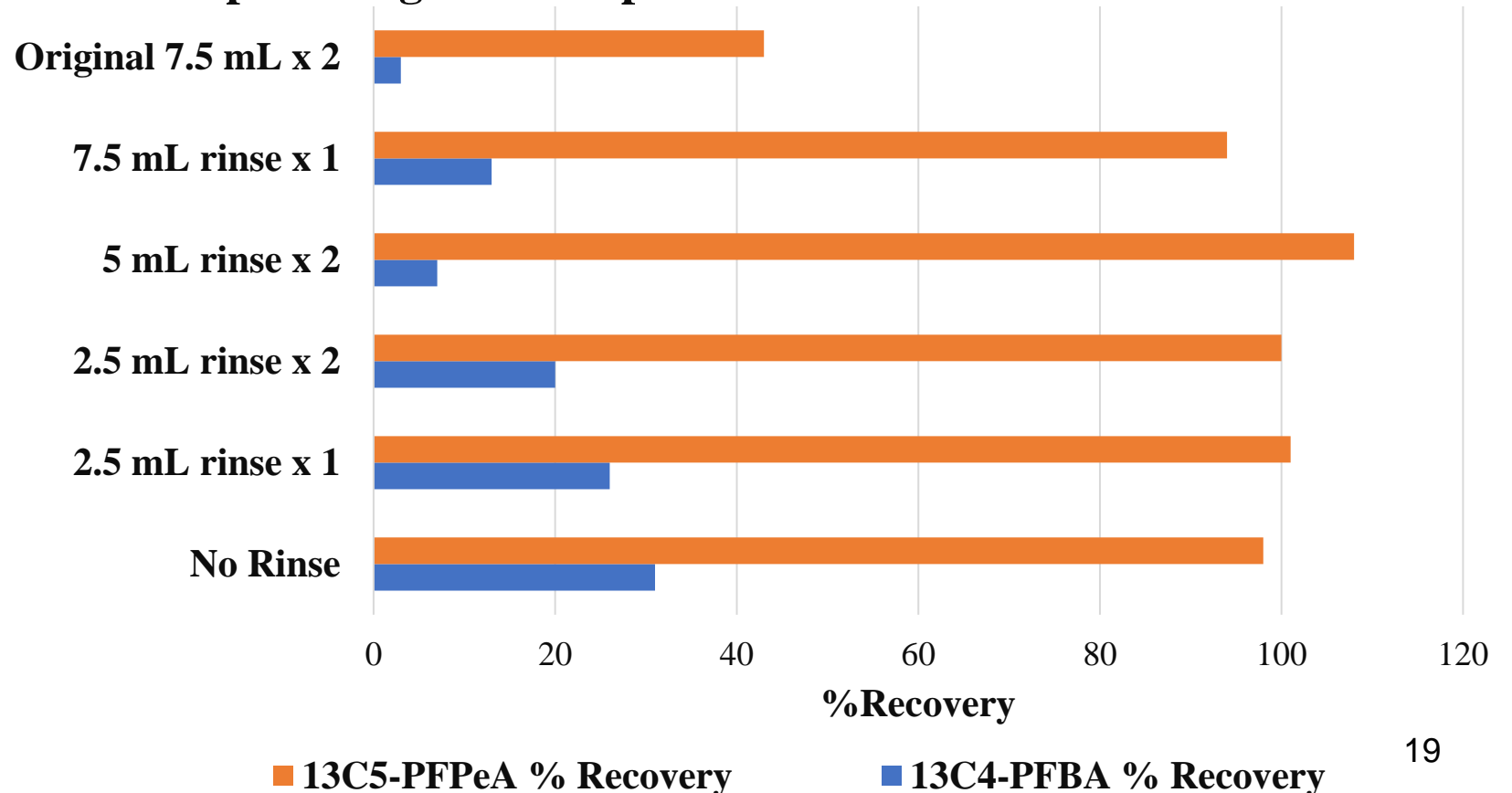
Surrogate	Surrogate % Recovery
13C4-PFBA	3
13C5-PFPeA	43
13C5-PFHxA	125
13C4-PFHpA	112
13C8-PFOA	105
-	-
-	-
13C9-PFNA	110
13C6-PFDA	101
13C7-PFUdA	87
13C2-PFDoA	87
-	-
13C2-PFTeDA	93
-	-
-	-
13C8-FOSA	17

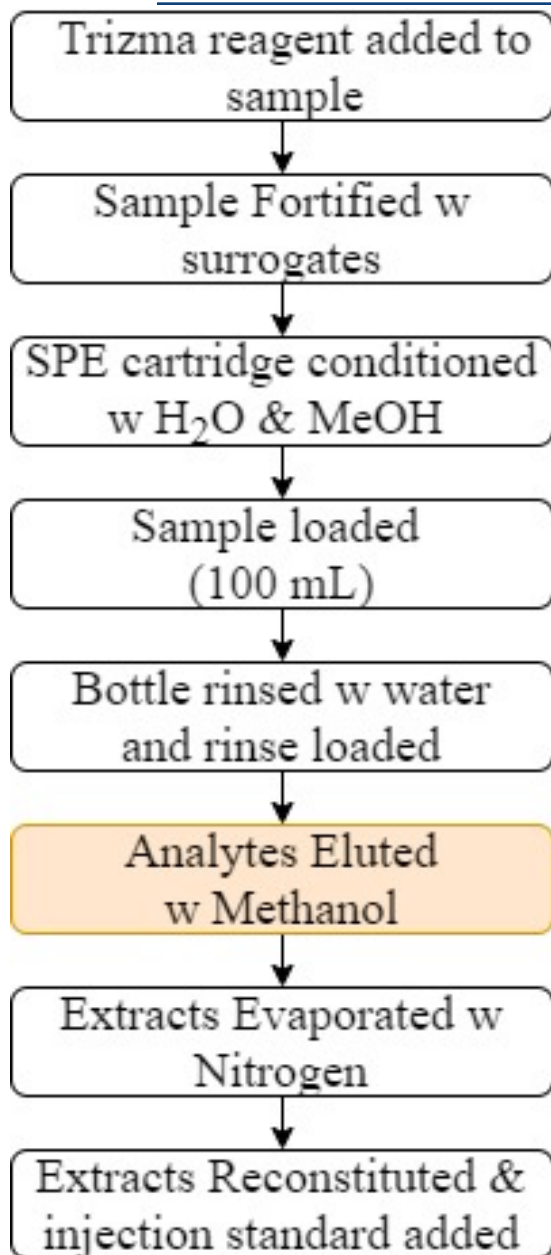


Optimized Rinse Step

- EPA 537 specifies a water rinse of 2 x 7.5 ml
- While maintaining a rinse step, one rinse of 2.5 mL allowed for surrogate recoveries of $^{13}\text{C}_4\text{-PFBA} > 25\%$ and $^{13}\text{C}_5\text{-PFPeA} \sim 100\%$

Optimizing Rinse step for $^{13}\text{C}_4\text{-PFBA}$ and $^{13}\text{C}_5\text{-PFPeA}$

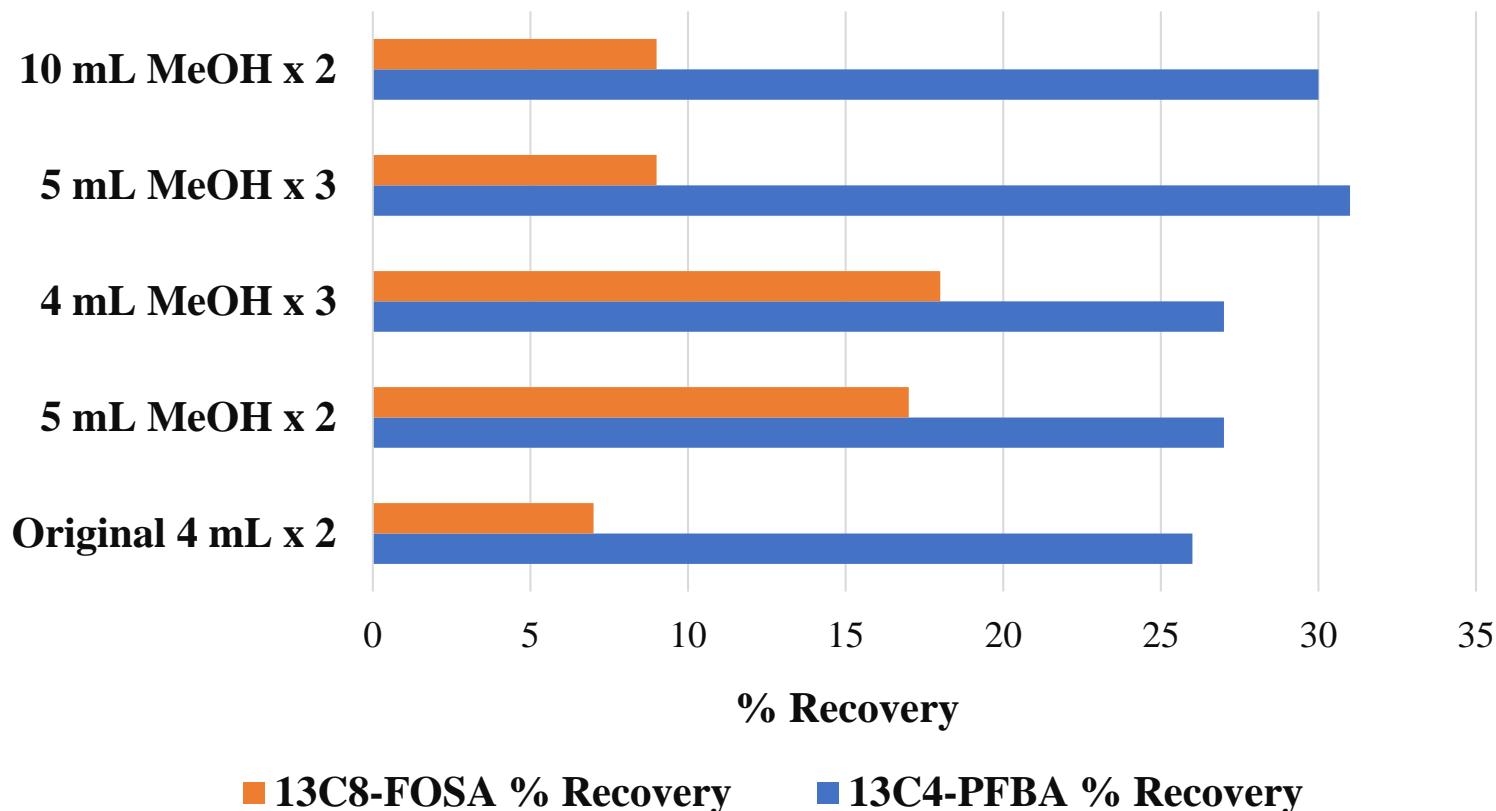


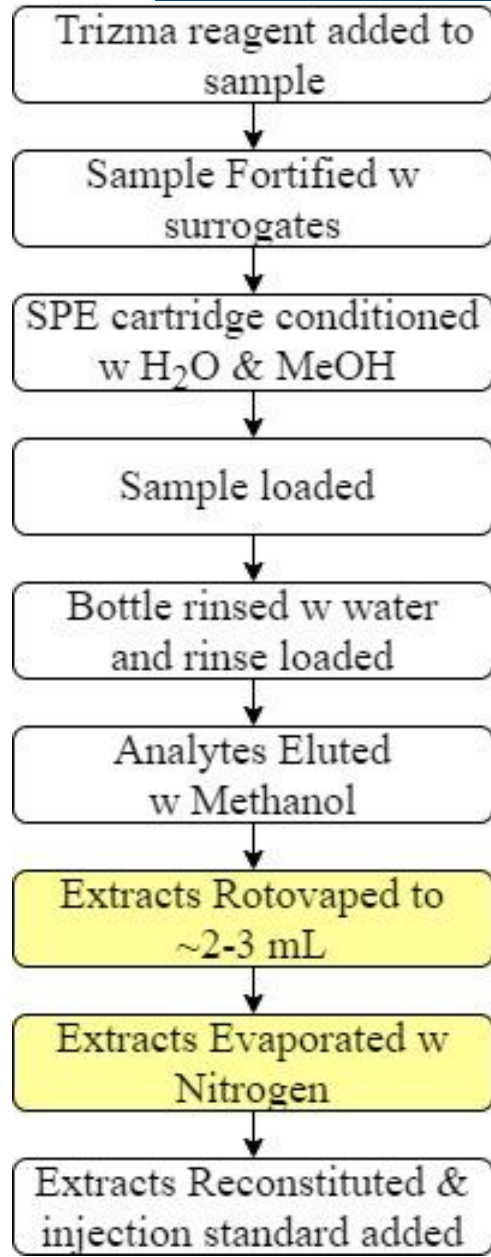


Optimized volume of elution methanol used:

- 5 mL methanol twice
- Highest ¹³C₄-PFBA and ¹³C₈-FOSA recoveries while minimizing elution volume

Optimizing Elution Volume

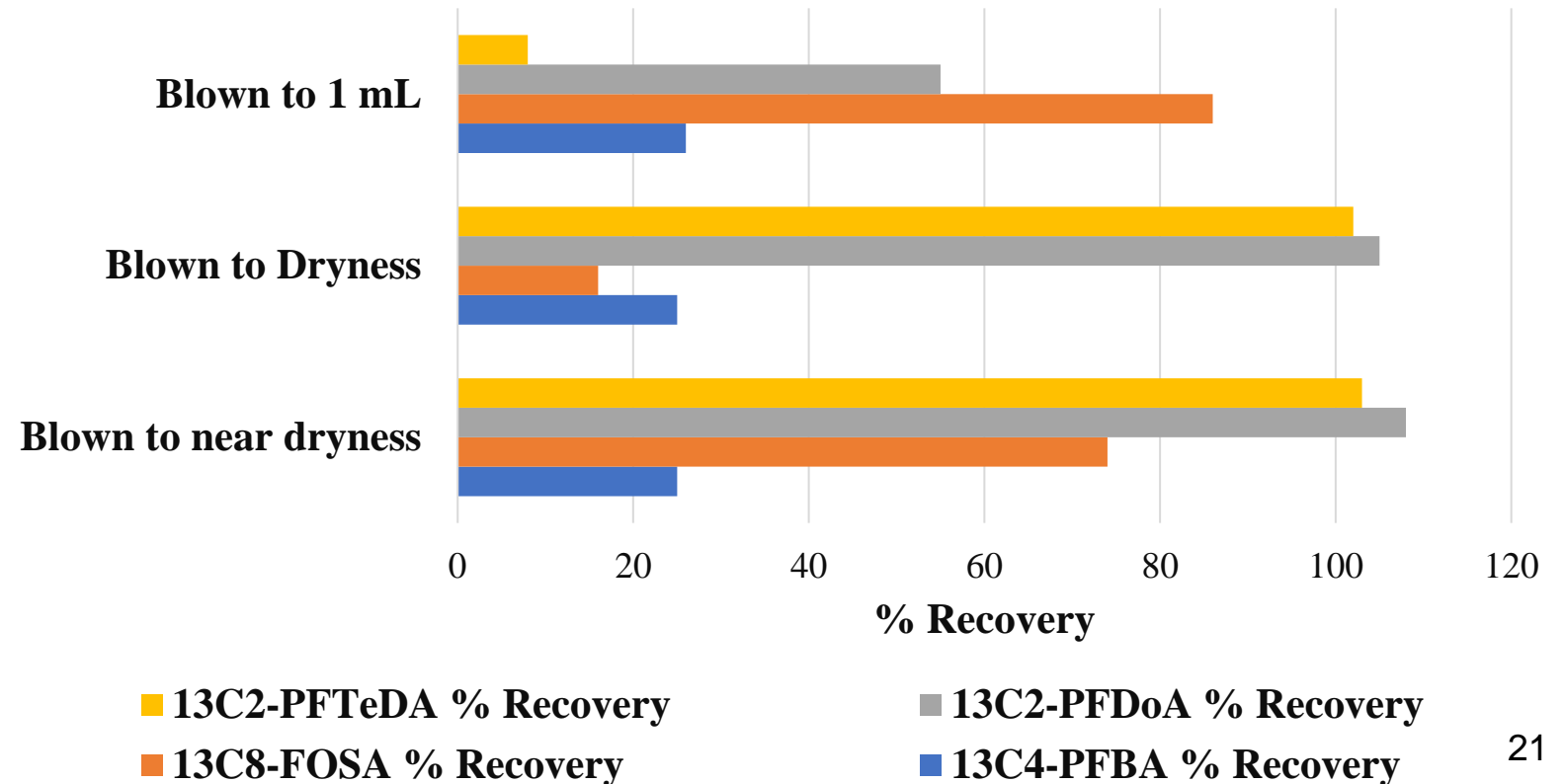




Optimized FOSA recovery to decrease losses in blow down step:

- Optimal = blown down to near dryness
- Blown to dryness: loss of sulfonamides (FOSA, FBSA, FHxSA)
- Insufficient drying: loss of long-chain carboxylic acids (PFDoA, PFTeDA)
- Too much heat = conversion of NFBP1 to MeO-NFBP1

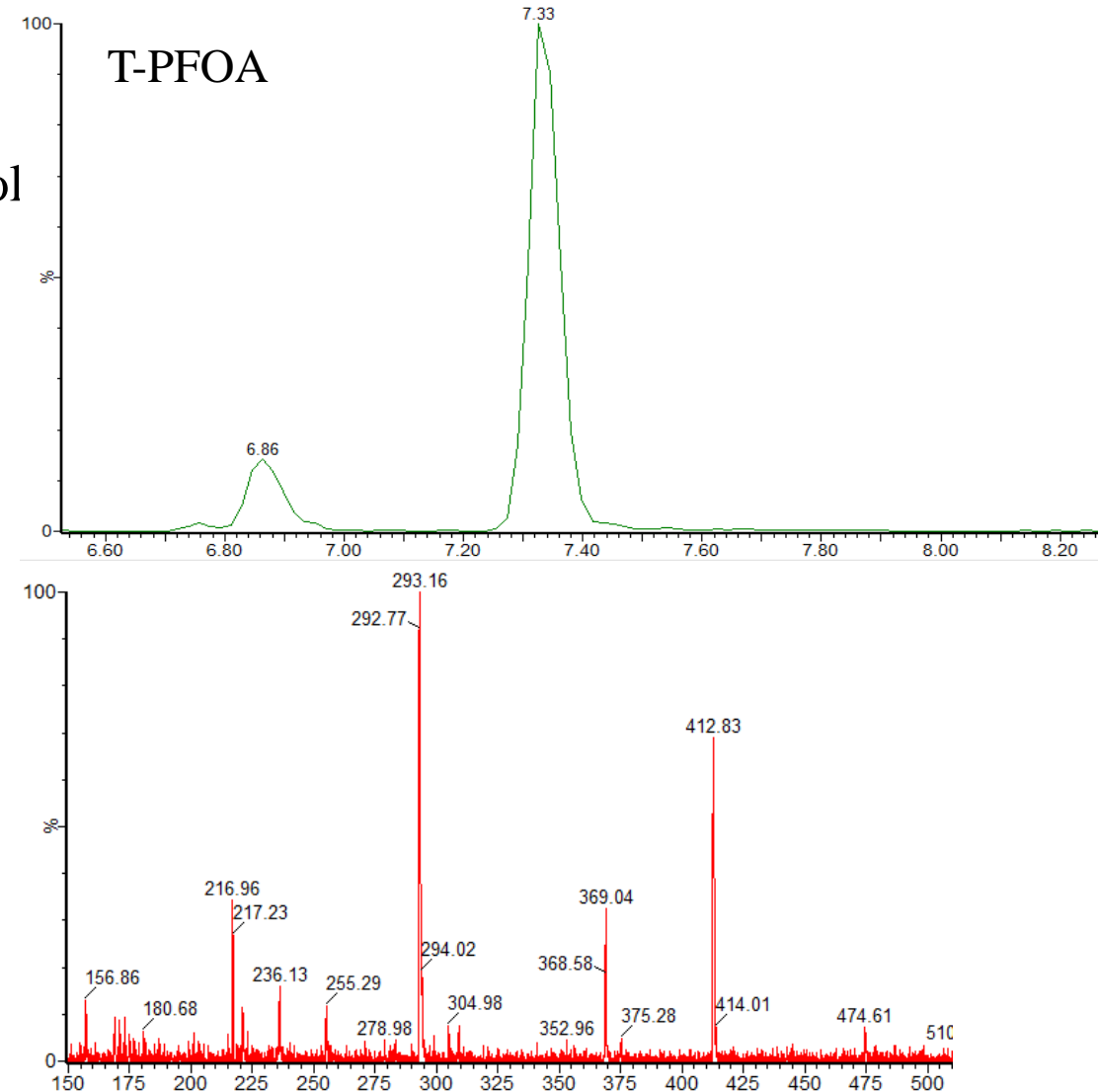
Optimizing the Blow-Down Step





In-house method QA/QC requirements:

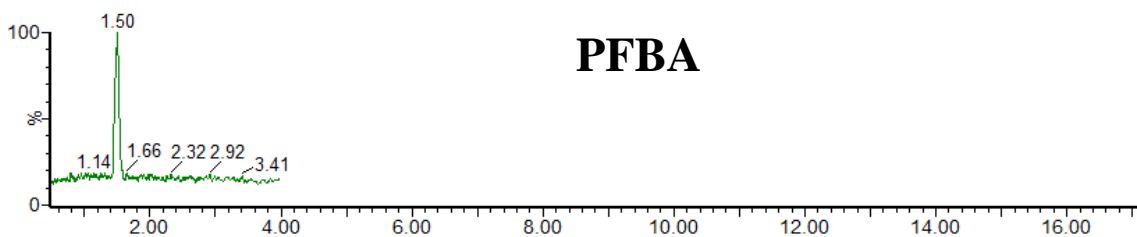
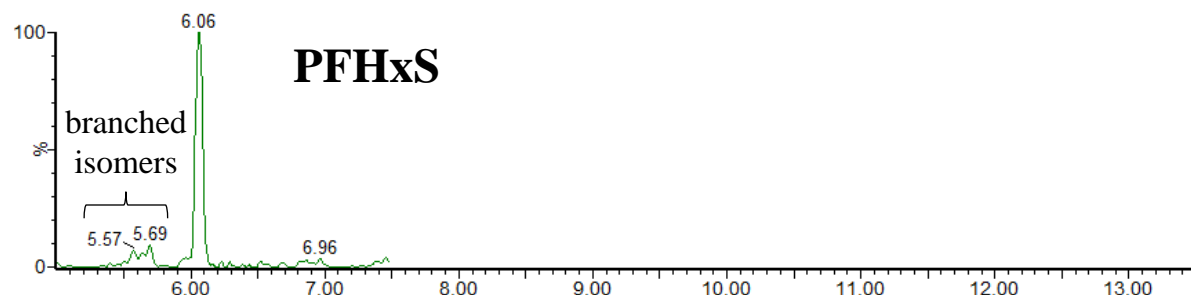
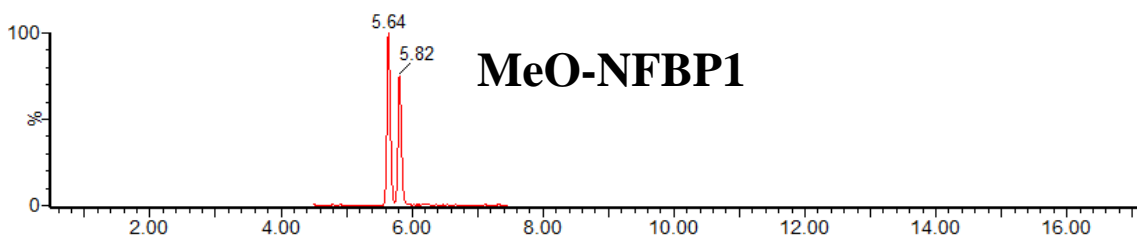
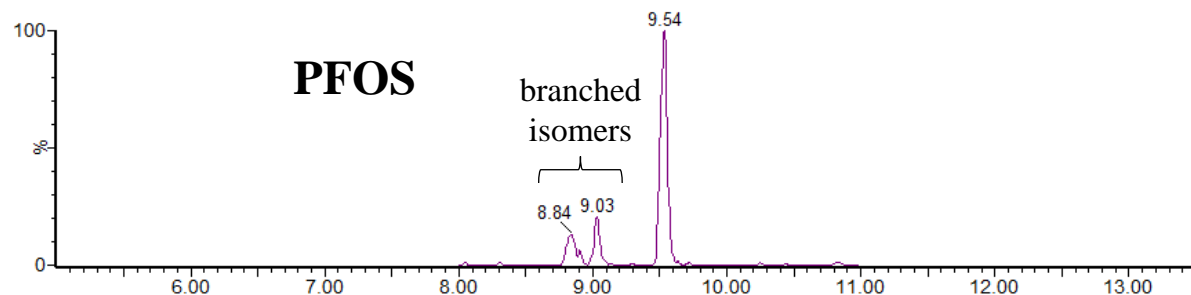
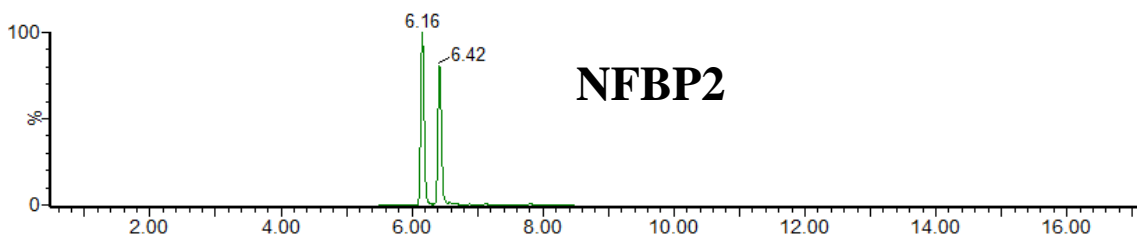
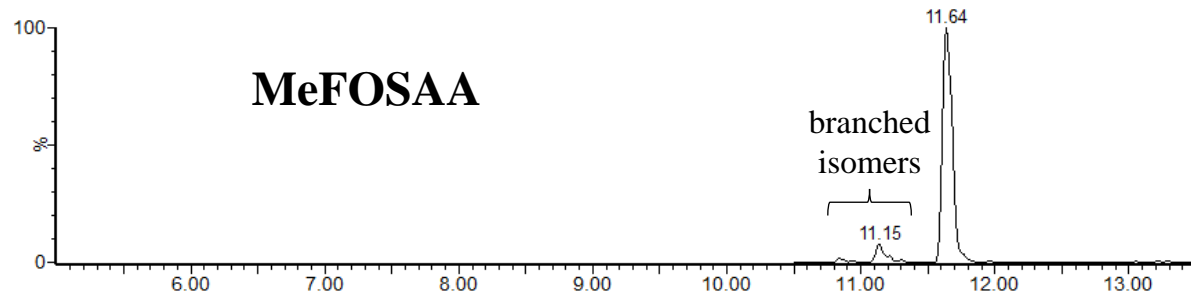
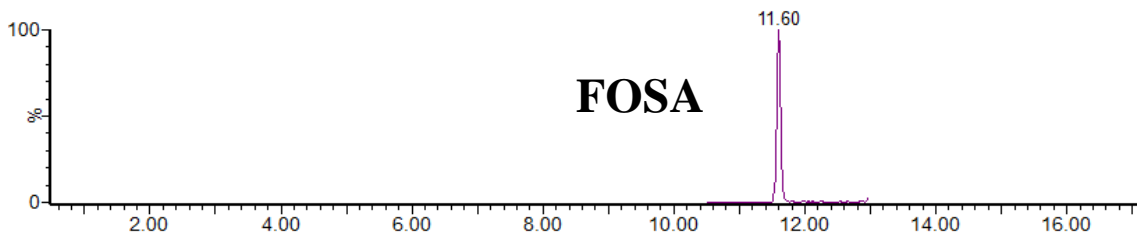
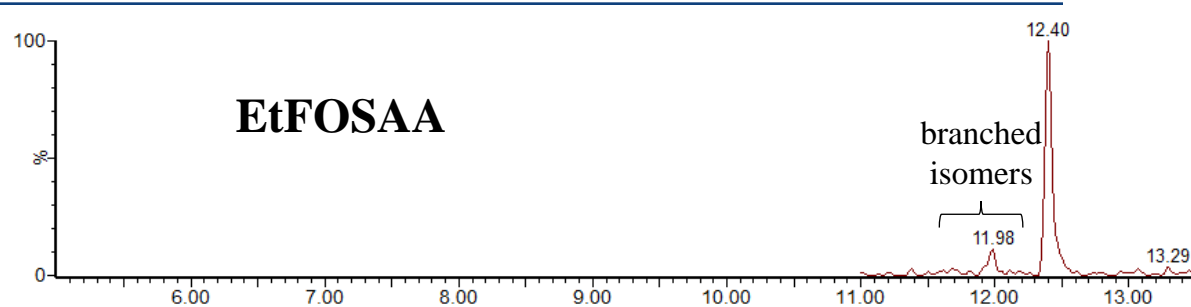
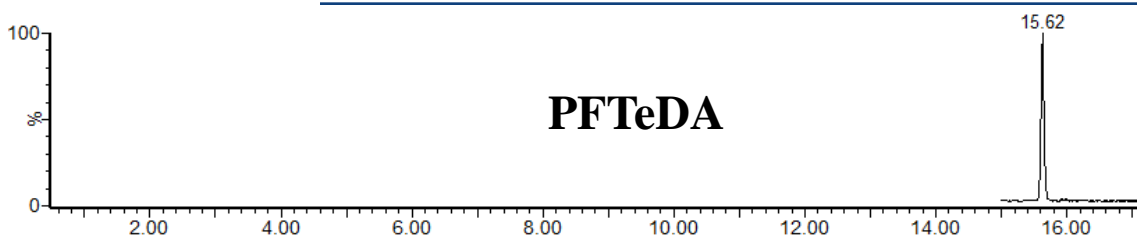
- Two Calibration Curves (0.0500 – 100 ng/mL)
 - PFAC30PAR + NFBP2 + MeO-NFBP1 in methanol
 - NFBP1 in acetonitrile
 - %RSD <25%
 - % Deviation <30% / <50%
- System Suitability
 - S/N requirement
 - MS Drift Check
 - T-PFOA
 - Sensitivity Control Charts
- Surrogate recoveries = 50-150%
 - $^{13}\text{C}_4$ -PFBA and $^{13}\text{C}_8$ -FOSA = 20-150%
- Acceptable Lab Blanks
- Acceptable recoveries for Fortified Lab Blank
- Samples prepared in duplicate
- Monitored for MeO-NFBP1





Calibration Set #1 (CS2 0.200 ng/mL)

Waters™





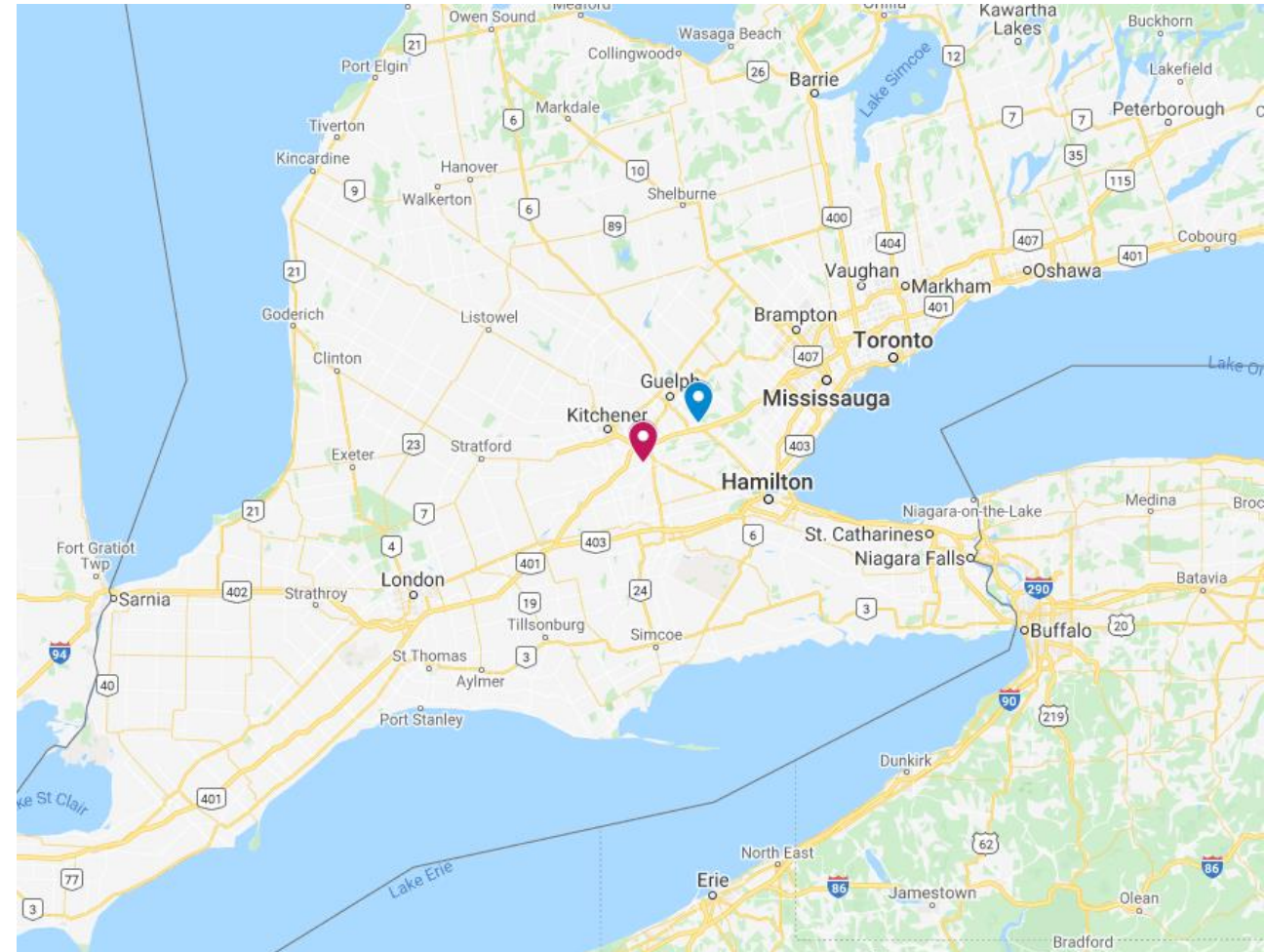
Confirmed Method Accuracy using a Waters ERA QA/QC Sample

Instrument	Replicate (ng/L)		Mean	SD	%RSD	% of Target	Category (Certified or Reference value)	Target value (ng/L)	Lower Limit	Upper Limit	Within Limit
	1	2									
L-PFHxA	395	416	405.5	15	3.7	101.38	ERA CofA Value	400	260	540	Yes
L-PFHpA	450	462	456.0	8.5	1.9	97.02	ERA CofA Value	470	306	635	Yes
L-PFOA	336	341	338.5	3.5	1.0	98.12	ERA CofA Value	345	224	466	Yes
L-PFNA	148	154	151.0	4.2	2.8	100.67	ERA CofA Value	150	97.5	203	Yes
L-PFDA	250	260	255.0	7.1	2.8	92.73	ERA CofA Value	275	179	371	Yes
L-PFDoA	424	430	427.0	4.2	1.0	98.16	ERA CofA Value	435	283	587	Yes
L-PFTrDA	158	166	162.0	5.7	3.5	101.25	ERA CofA Value	160	104	216	Yes
N-EtFOSAA	45.4	46.1	45.8	0.5	1.1	76.25	ERA CofA Value	60.0	39.0	81.0	Yes
HFPO-DA	621	649	635.0	20	3.1	97.69	ERA CofA Value	650	423	878	Yes
L-PFBS	749	800	774.5	36	4.7	103.13	ERA CofA Value	751	488	1014	Yes
L-PFHxS	146	154	150.0	5.7	3.8	80.21	ERA CofA Value	187	122	252	Yes
L-PFOS	124	132	128.0	5.7	4.4	79.01	ERA CofA Value	162	105	219	Yes
DONA	336	347	341.5	7.8	2.3	99.27	ERA CofA Value	344	224	464	Yes
9Cl-PF3ONS	177	171	174.0	4.2	2.4	95.60	ERA CofA Value	182	118	246	Yes



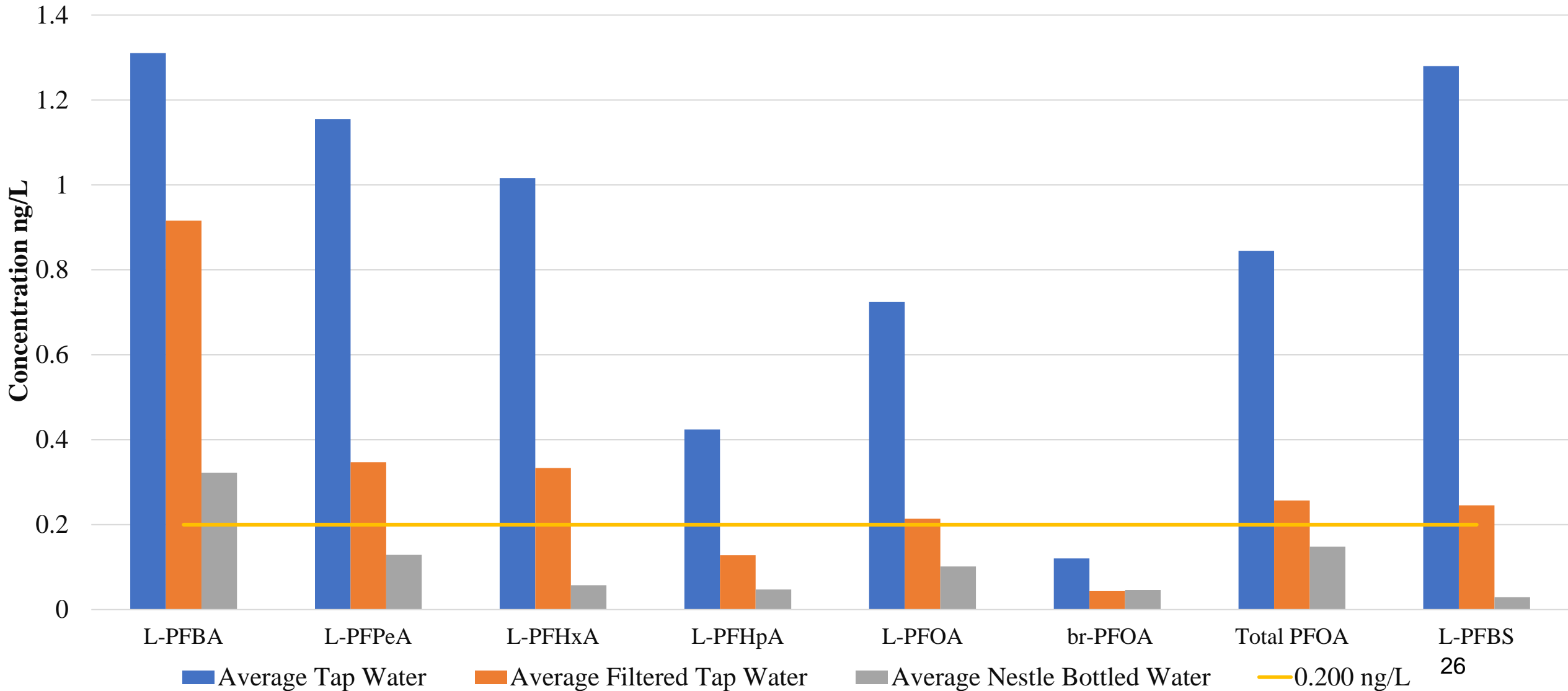
New in-house method used to determine PFAS levels (including NFBP1 and NFBP2) in:

- Nestlé bottled water collected in Aberfoyle (**blue** marker)
- Cambridge tap water (**red** marker)
- Cambridge filtered tap water (**red** marker)
 - “Waterdrop” pitcher water with a carbon filter



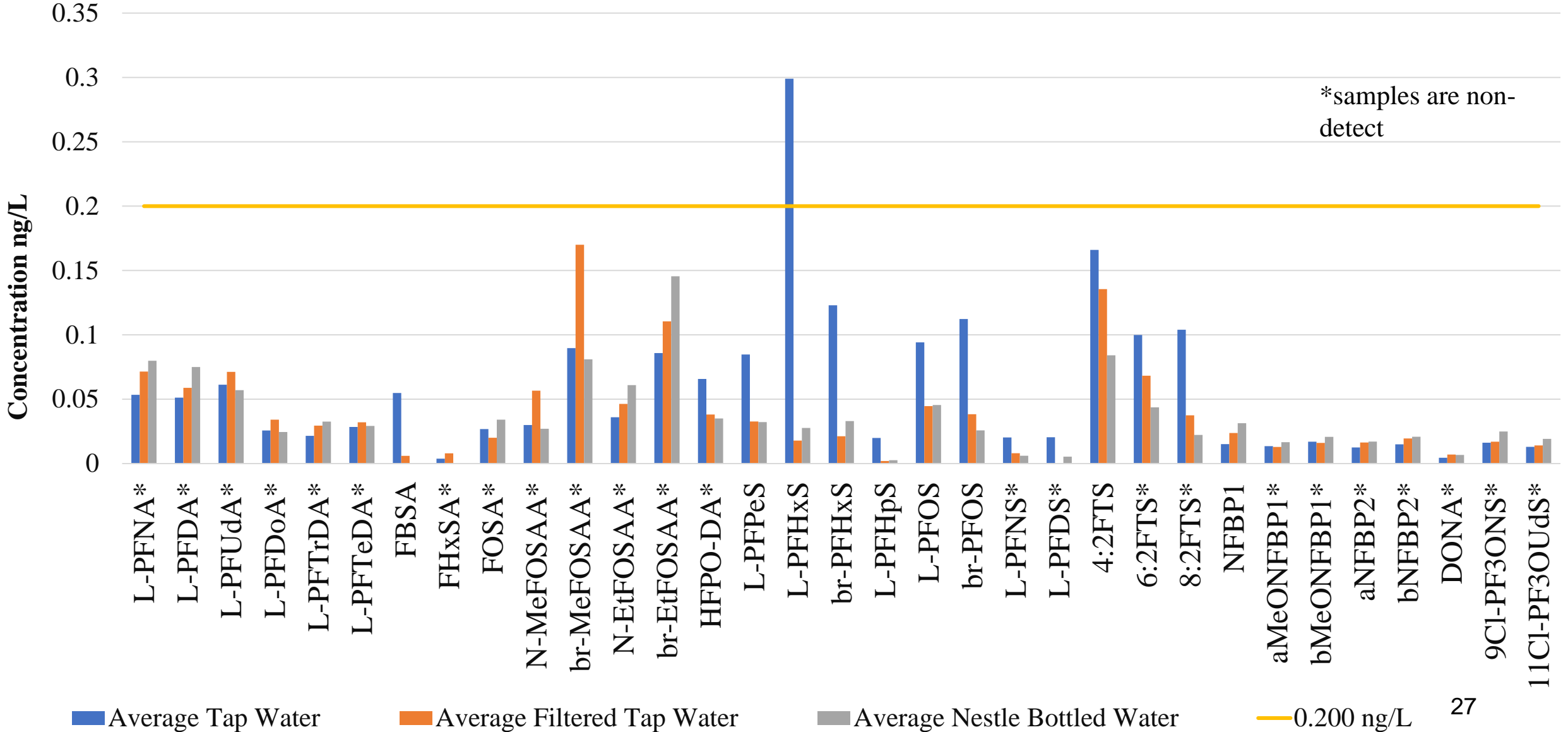


Highest PFAS Analyte Concentrations in Ontario Water Samples





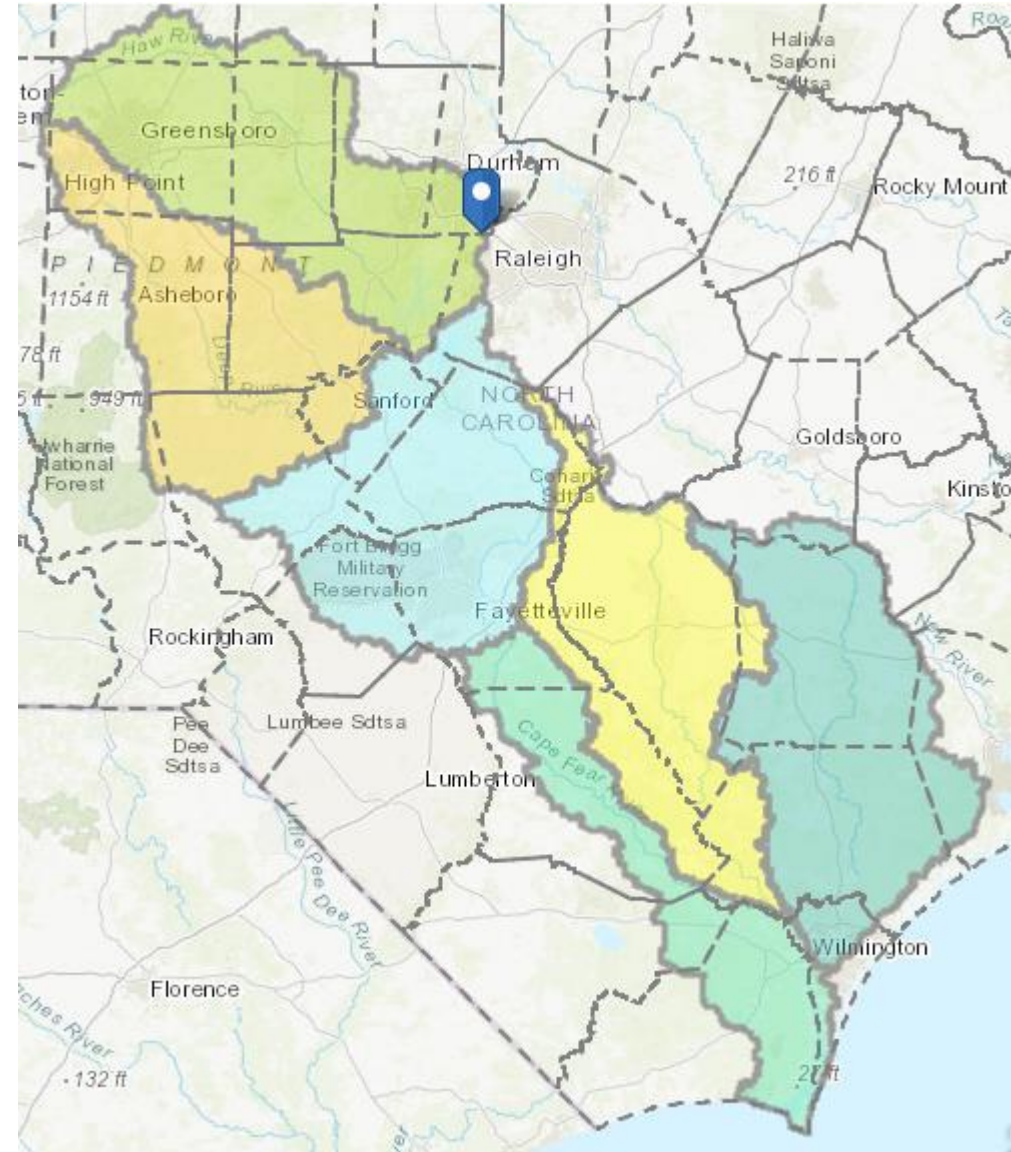
PFAS Analyte Concentrations in Ontario Water Samples





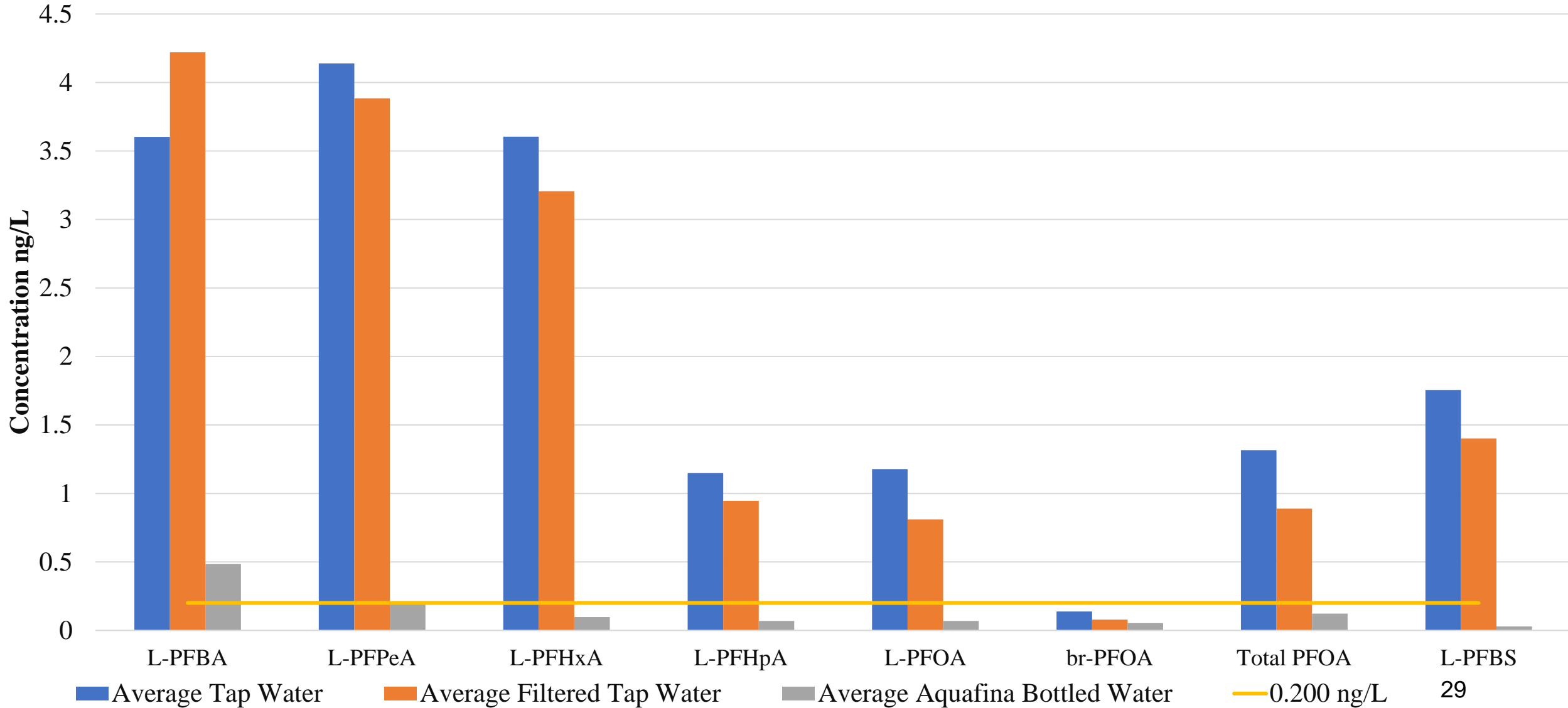
New in-house method used to determine PFAS levels (including NFBP1 and NFBP2) in:

- Aquafina
 - reverse osmosis
- North Carolina tap water
- North Carolina filtered tap water
 - Samsung fridge filter (carbon)



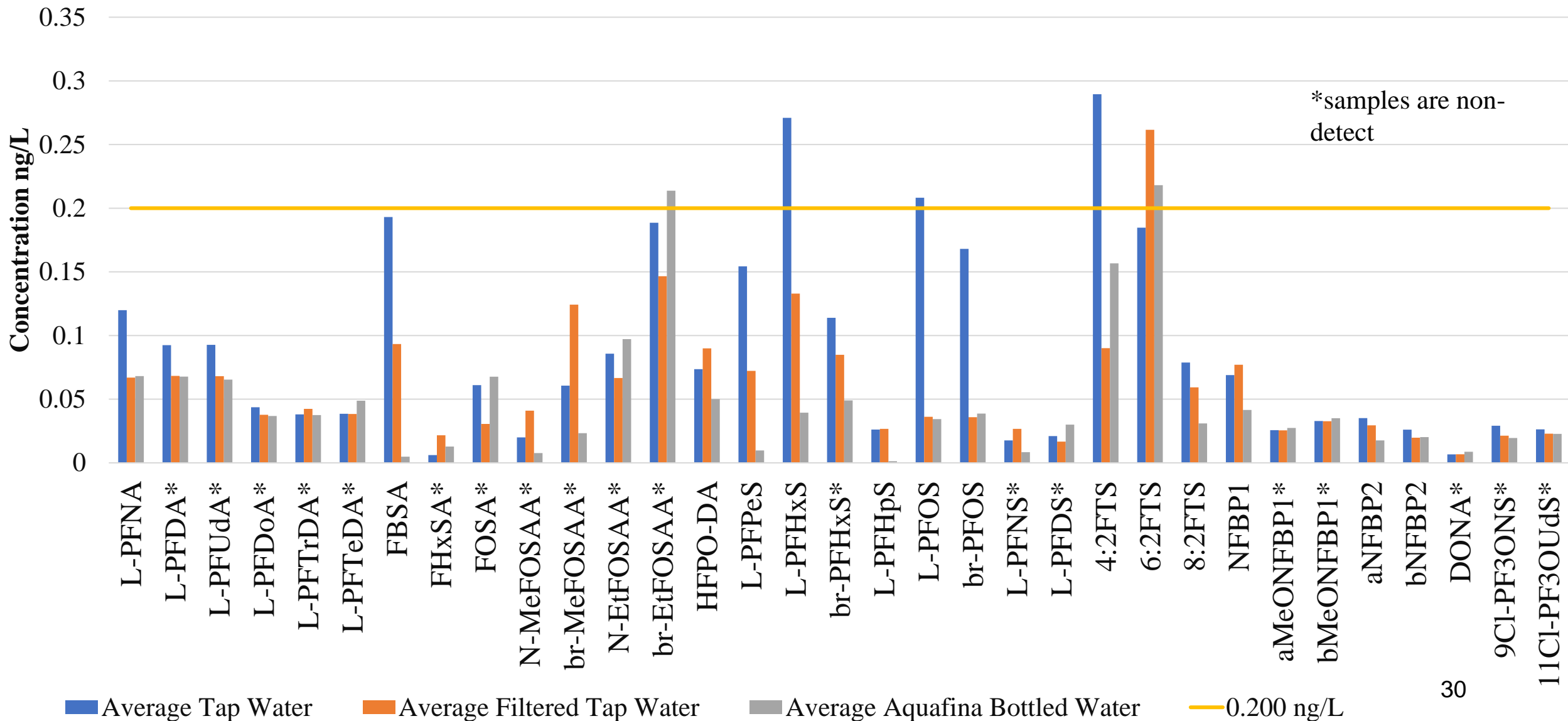


Elevated PFAS Analyte Concentrations ion North Carolina Water Samples





PFAS Analyte Concentration in North Carolina Water Samples

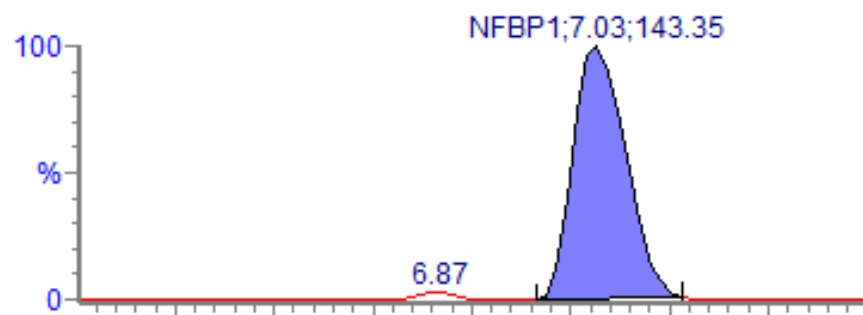




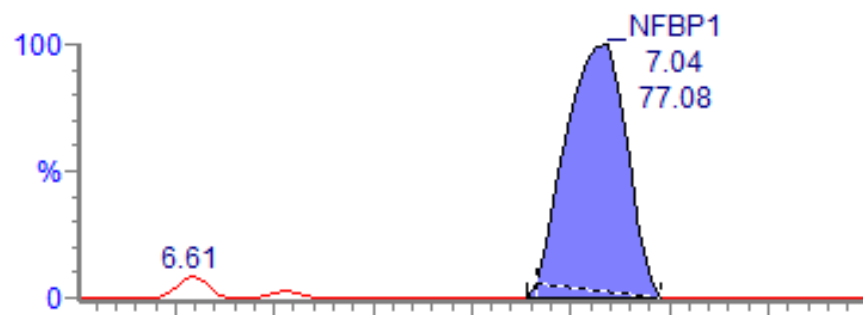
Nafion byproduct 1 in North Carolina Water:

Tap water

Concentration: 0.102 ng/L

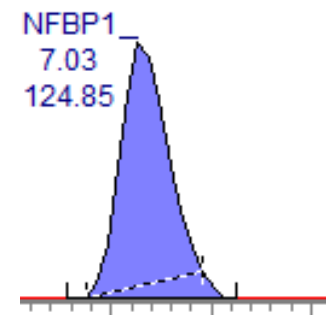


15Jul2021_EPA537_NC_26 Smooth(Mn,2x1)
JR0714-TW2

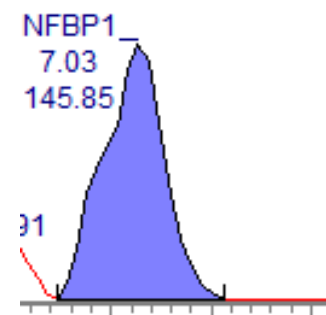


Filtered Tap water

Concentration: 0.0873 ng/L

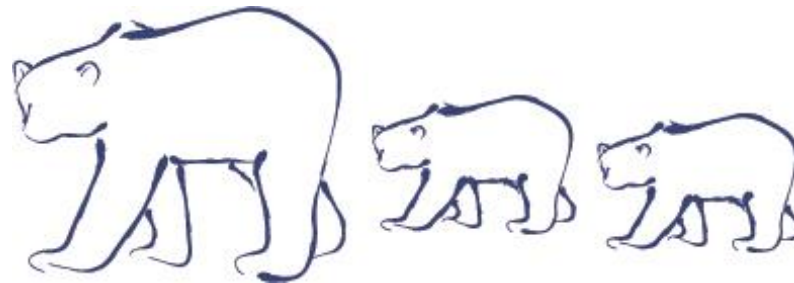


i(Mn,2x1)





- Nafion byproduct 1 was unstable when stored in methanol (especially when exposed to heat)
- Nafion byproduct 1 degraded in the presence of base (NH_4OH)
- Expansion and modification of the current in-house method allowed for the quantitation of NFBP1 and NFBP2 with legacy PFAS
- NFBP2 standards were stable in methanol
- NFBP1 standards were only stable in acetonitrile, therefore two calibration curves were required



WELLINGTON LABORATORIES INC.



Wellington (Characterization/Analysis)

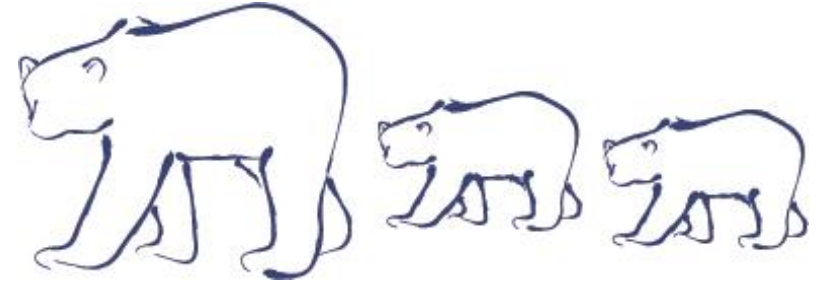
- Jordan Stubbleski
- Nicole Riddell
- Lauren Irwin

Waters (Technical Support)

- Frank Dorman
- Kari Organtini

Sample Collection

- Allison Brazeau and family
- Yadavan Varatharajah



WELLINGTON LABORATORIES INC.

Questions??

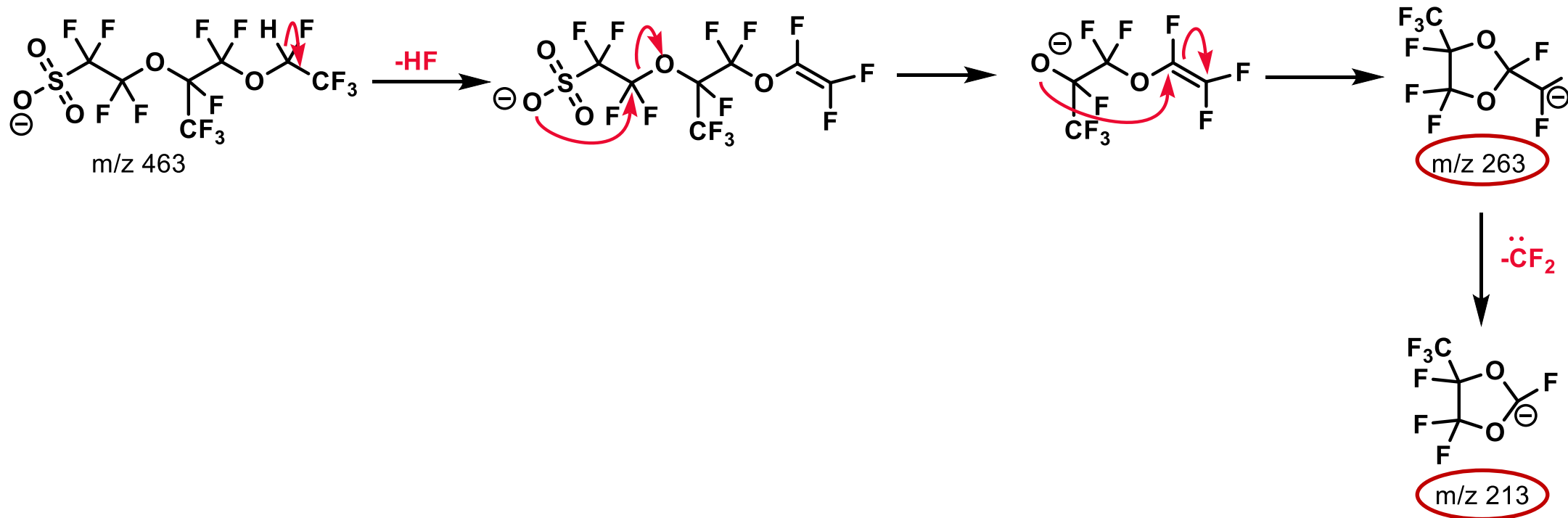
email: jennifer@well-labs.com



Extra Slides



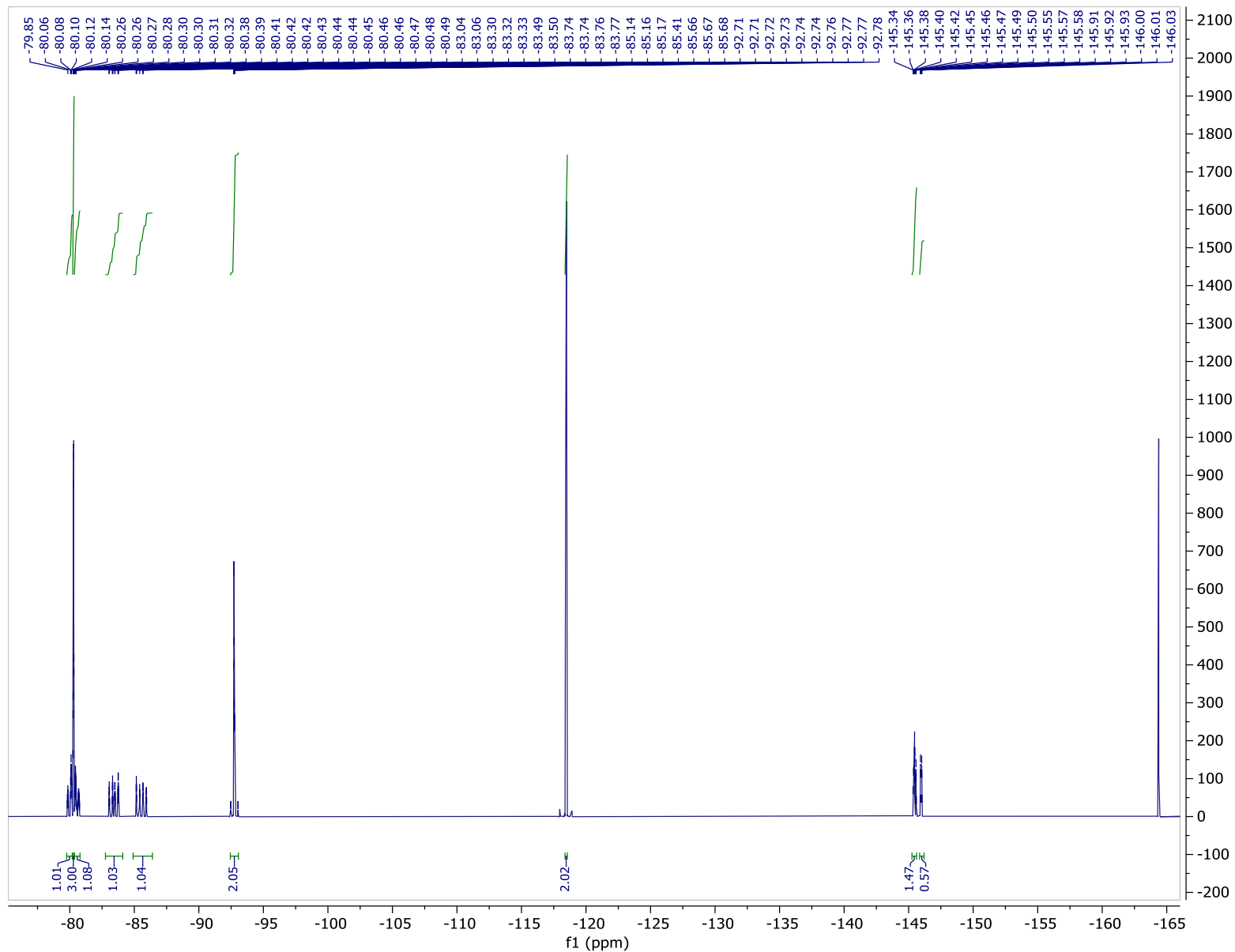
NFBP2





MeO-NFBP1 ¹⁹F NMR

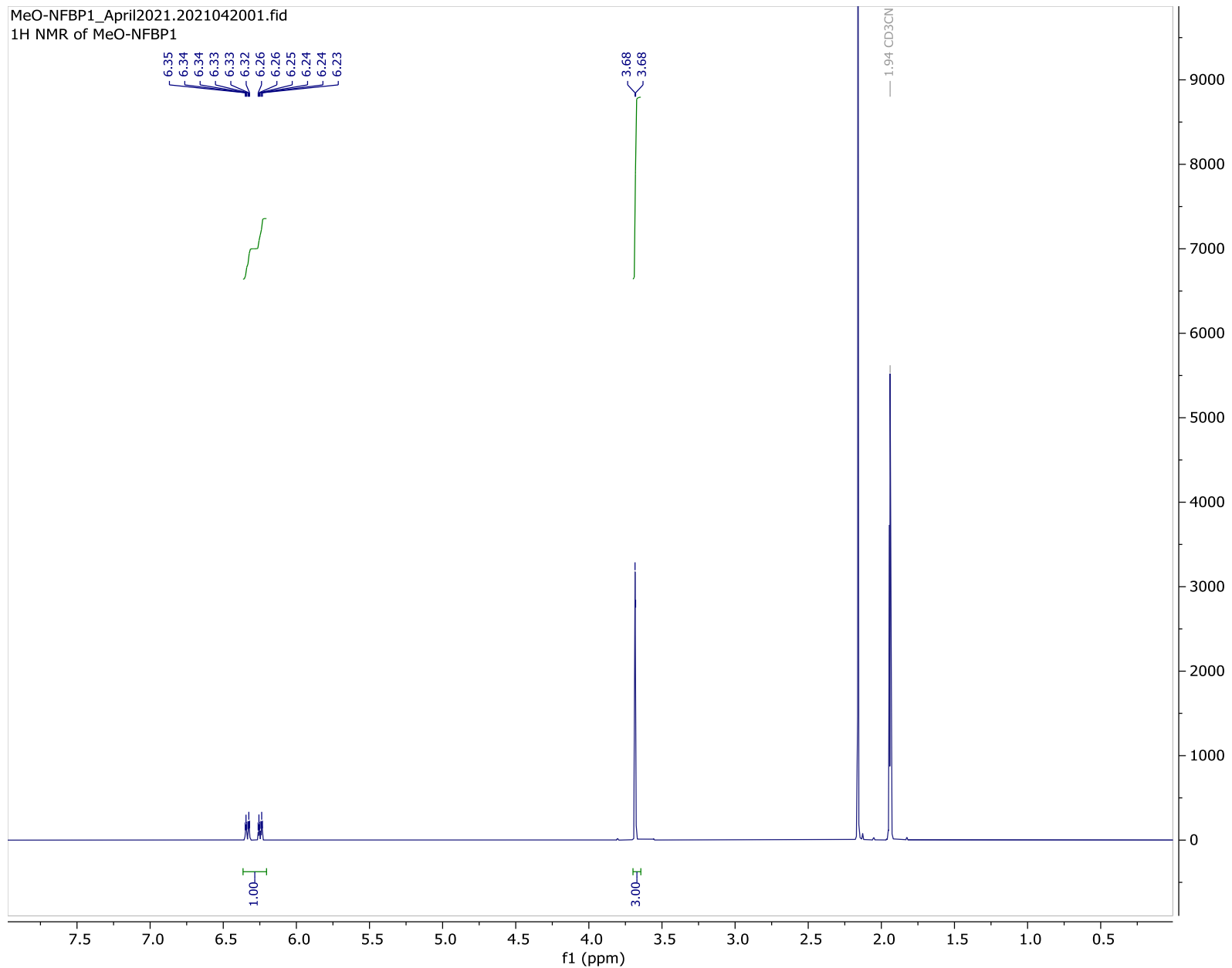
Waters™





MeO-NFBP1 ¹H NMR

Waters™





NMR ANALYSIS

- ¹⁹F 565 MHz Bruker Avance III NMR
- ¹H 600 MHz Bruker Avance III NMR

COMPUTATIONAL

- Firefly, DFT, B3LYP 6-311G(d,p)



Expansion of Targeted Analysis of Standard PFAS Analytes

Potassium perfluoro-1-butanesulfonate	L-PFBS	Perfluoro-n-butanoic acid	PFBA
Sodium perfluoro-1-pentanesulfonate	L-PFPeS	Perfluoro-n-pentanoic acid	PFPeA
Potassium perfluorohexanesulfonate ^c	PFHxSK: linear isomer	Perfluoro-n-hexanoic acid	PFHxA
	PFHxSK: Σ branched isomers	Perfluoro-n-heptanoic acid	PFHpA
Sodium perfluoro-1-heptanesulfonate	L-PFHpS	Perfluoro-n-octanoic acid	PFOA
Potassium perfluorooctanesulfonate ^d	PFOSK: linear isomer	Perfluoro-n-nonanoic acid	PFNA
	PFOSK: Σ branched isomers	Perfluoro-n-decanoic acid	PFDA
Sodium perfluoro-1-nonanesulfonate	L-PFNS	Perfluoro-n-undecanoic acid	PFUdA
Sodium perfluoro-1-decanesulfonate	L-PFDS	Perfluoro-n-dodecanoic acid	PFDoA
Sodium 1H,1H,2H,2H-perfluorohexanesulfonate	4:2FTS	Perfluoro-n-tridecanoic acid	PFTrDA
Sodium 1H,1H,2H,2H-perfluorooctanesulfonate	6:2FTS	Perfluoro-n-tetradecanoic acid	PFTeDA
Sodium 1H,1H,2H,2H-perfluorodecanesulfonate	8:2FTS	Perfluoro-1-butanesulfonamide	FBSA
Sodium dodecafluoro-3H-4,8-dioxanonoate	NaDONA	Perfluoro-1-hexanesulfonamide	FHxSA
Potassium 9-chlorohexadecafluoro-3-oxanonane-1-sulfonate	9Cl-PF3ONS	Perfluoro-1-octanesulfonamide	FOSA
Potassium 11-chloroeicosafluoro-3-oxaundecane-1-sulfonate	11Cl-PF3OUdS	2,3,3,3-Tetrafluoro-2-(1,1,2,2,3,3,3-heptafluoropropoxy)propanoic acid	HFPO-DA
		N-methylperfluorooctanesulfonamidoacetic acid ^a	N-MeFOSAA: linear isomer
			N-MeFOSAA: Σ branched isomers
		N-ethylperfluorooctanesulfonamidoacetic acid ^b	N-EtFOSAA: linear isomer
			N-EtFOSAA: Σ branched isomers



Proficiency test performed to establish that the instrumentation method and cal curve are sufficient

- Compared to UPLC-TQ-S Micro

PFAC-PT-20

Waters Aquity UPLC/MS

Analytes	Concentration	Units
PFHxA	103	ng/ml
PFDA	202	ng/ml
PFBS	42.1	ng/ml
PFNS	76.1	ng/ml

TQ-XS MS/MS

Analytes	Concentration	Units
L-PFHxA	97.5	ng/ml
L-PFDA	206	ng/ml
L-PFBS	39	ng/ml
L-PFNS	82	ng/ml

Analytes	%RSD (Concentration)	Max % RSD Allowed
PFHxA	3.88	25.00
PFDA	1.39	25.00
L-PFBS	5.59	25.00
L-PFNS	4.85	25.00



Calibration Set #1 (CS2 0.200 ng/mL)

Waters™

